

AltaiCare is a cloud-first network management-as-a-service platform that provides centralized visibility and control over the entire product portfolio of the Altai Super WiFi solutions, without the cost and complexity of WLAN controllers or overlay management systems. It greatly simplifies the deployment, operation, and on-going maintenance of Wi-Fi networks of any size.

Product Overview

AltaiCare offers comprehensive cloud services and an on-premises virtual appliance for different deployment scenarios.

AltaiCare Cloud Services

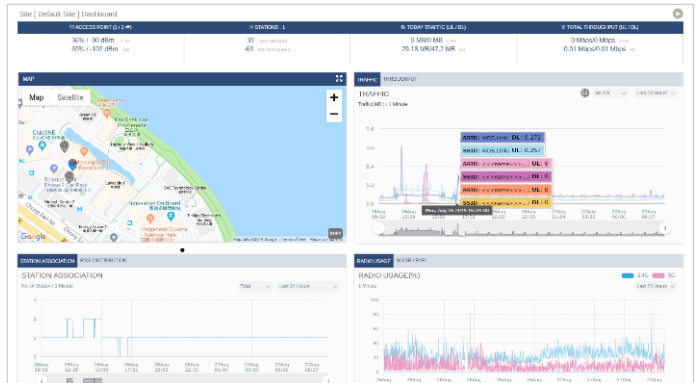
A cloud-based management-as-a-service platform with a subscription model. Hosted via Amazon AWS, AltaiCare is maintained by the Altai Cloud Operations team, and is updated with new features and bug fixes on a regular basis.

AltaiCare On-Premises

A virtualized version of AltaiCare Cloud Services for enterprises, AltaiCare On-Premises supports easy deployment in VMware, and offers unique features including Active Directory support, northbound interface, and RESTful APIs.

Cloud Management Architecture

Every Altai AP device either connects over the Internet, or over a local LAN, to AltaiCare. These secured connections utilize a proprietary protocol



that provides real-time visibility and control, yet uses minimal bandwidth overhead.

The out-of-band control plane of AltaiCare separates management data from user data. Management data flows from Altai devices to AltaiCare, whereas user data breaks out to the local LAN and flows directly to its destination through an existing firewall.

Unmatched Reliability and Scalability

AltaiCare is built on secure, highly redundant, and massively scalable cloud technologies, ensuring the highest possible availability and uninterrupted service. It can support small deployments and can easily ramp-up to support Wi-Fi networks with thousands of APs and tens of thousands of users.

Key Features and Benefits

- **Comprehensive Deployment Options:** Support cloud services and on-premises management for maximizing deployment flexibility.
- **Centralized Visibility and Control:** Zero-touch provisioning and monitoring of APs, backhaul links, and clients from a single-pane-of-glass web UI, with key performance metrics, alarms, and alerts.
- **Full Network View:** The Access and Backhaul view, as well as the AP-CPE topology tree, offers full network visibility and control from tower to edge.
- **Simple Guest and Private Network Setup:** Fully customizable captive portal for guest Wi-Fi with multiple login options and secured private network access using PSK or 802.1X.
- **Built-in Reporting and Analytics:** Extensive report options with up to 12 months of historical data retention and 1 month of user login history for long-term trending analytics.
- **Automation and Third-Party Integration:** AltaiCare On-Premises supports RESTful APIs for automation or integration with OSS/BSS system and an SNMP-based northbound interface for NMS integration.

Deployment Options

- Cloud Services (Subscription-Based)
- On-Premises Virtual Appliance (VMware-Based)

Supported AP Number

- Cloud Unlimited
- On-Premises 3000

WLAN Management

- Site-Based Configuration and Batch Provisioning
- WLAN Scheduling
- Bulk Firmware Update Scheduling
- Radio Resource Management (Auto Channel Selection, Band Steering, † Multi-AP Steering, † Transmit Power Control, and more)
- Google Map and Indoor Layout Import
- Real-Time Site/AP/Bridge Link/Client Monitoring
- Bridge Link Topology Visualization
- Scheduled Reporting
- Alert Notifications: Individual AP, Site-Wide, Bridge Link, WIPS-Related

Access Services

- Captive Portal
 - Portal Page Templates and HTTP/CSS Customizable Package
 - Click-Through, User Sign-Up and Standard Account Login
 - Social Login: Facebook, Google (For Cloud version only)
 - Guest Access Vouchers
 - MAC Caching for Repeated Users' Login Bypassing Splash Page
 - Targeted Advertising based on Login Location, User Login Profile, Time, and Customized Tags
 - Integration with Third-Party Guest Wi-Fi Marketing Platforms: Linkyfi, Purple Wi-Fi, and more
- RADIUS
 - User Group and Account Management
 - Per-User QoS and Access Control: Session Timeout, Data Quota, Account Validity, VLAN, Bandwidth Control, and more
 - User Traffic Accounting

Data Plane

- Architecture
 - Distributed Forwarding (Client data traffic stays local and sent through an existing gateway/firewall)
- VLAN
 - Per WLAN Assignment (Access/Trunk)
 - Role-Based Assignment (Dynamic VLAN)
 - † VLAN Pooling

Data and Reporting

- Scope
 - Per Site
 - Per AP
- Data Analytics
 - Site/WLAN/AP/Bridge Link/Client/RF Performance Statistics

- Top APs/Clients by Traffic
- User Login and Session Statistics
- Reports Exported in CSV and PDF
- Restful API for Monitoring (For On-Premises and Private Cloud only)
- Up to 12-Months of Historical Data Retention
- Up to 1-Month of Client Association and Login History (For On-Premises and Private Cloud only)

WLAN Security

- Standards
 - WPA/WPA2/WPA3
 - 802.11i
 - 802.11w (Management Frame Protection)
- Authentication
 - WPA/WPA2-Personal (PSK)
 - WPA/WPA2-Enterprise (802.1X/EAP)
 - WPA3-Personal (SAE)
 - WPA3-Enterprise (802.1X/EAP)
 - WEP
 - Open (Portal, MAC Authentication)
 - † Multi-PSK
 - Combination of Portal and PSK
 - Combination of MAC Authentication and PSK
- Encryption
 - WEP
 - TKIP
 - AES
- User Database
 - RADIUS (Internal/External)
 - Active Directory (For On-Premises only)
- User Access Control
 - MAC Address-Based ACL
 - Layer 2 Isolation
- Wireless Intrusion Prevention System (WIPS)
 - Rogue AP/Client Detection
 - DoS Attack Prevention
 - AP Spoof Prevention
 - Password Guessing Protection

System Management

- Local Web Interface
- Northbound Interfaces
 - † SNMP v1/v2c/v3 (For On-Premises only)
 - Restful API (For On-Premises and Private Cloud only)
- Diagnostics (For On-Premises and Private Cloud only)
 - Packet Capture
 - Event Log and System Log
 - User Authentication Log
 - † Historic Operation Log
- Access Management
 - Trusted IP
 - Multiple Login Tiers
 - Password and Account Lockout Policies (For On-Premises and Private Cloud only)

† Will be available in the future.

Product Ordering Information	
AltaiCare Cloud Services	
Part No.: SD.CA-CL00-00	AltaiCare Annual Subscription for A8n(ac) or A8n Series AP (9,125 Credits)
Part No.: SD.CA-CL00-01	AltaiCare Annual Subscription for A3-Ei or AX Series AP (2,920 Credits)
Part No.: SD.CA-CL00-02	AltaiCare Annual Subscription for A2 or A2x AP (2,190 Credits)
Part No.: SD.CA-CL00-03	AltaiCare Annual Subscription for C260/M360/C2s/CX/IX/VX Series AP (730 Credits)
Part No.: SD.CA-CL00-04	AltaiCare Annual Subscription for C1n Series AP (365 Credits)
Part No.: SD.CA-CL00-05	AltaiCare Credit Pack (50,000 Credits)
Part No.: SD.CA-CL00-06	AltaiCare Credit Pack (100,000 Credits)
AltaiCare On-Premises	
Part No.: SD.CA-OP00-00	AltaiCare On-Premises Software Package
Part No.: SD.CA-OP00-01	AltaiCare On-Premises License Pack of 100 NE Points
Part No.: SD.CA-OP00-02	AltaiCare On-Premises License Pack of 500 NE Points
Part No.: SD.CA-OP00-03	AltaiCare On-Premises Annual Support for License Pack of 100 NE Points
Part No.: SD.CA-OP00-04	AltaiCare On-Premises Annual Support for License Pack of 500 NE Points
AltaiCare Private Cloud Services	
Part No.: SD.CA-PR00-01	Annual Private AltaiCare Cloud Subscription for 1-50 APs
Part No.: SD.CA-PR00-02	Annual Private AltaiCare Cloud Subscription for 51-200 APs
Part No.: SD.CA-PR00-03	Annual Private AltaiCare Cloud Subscription for 201-500 APs
Part No.: SD.CA-PR00-04	Annual Private AltaiCare Cloud Subscription for 501-1000 APs
Contact Us	
<ul style="list-style-type: none"> Email: sales@altaitechnologies.com or info@altaitechnologies.com 	

CARE-PB-240413

The information contained herein is subject to change without prior notice.