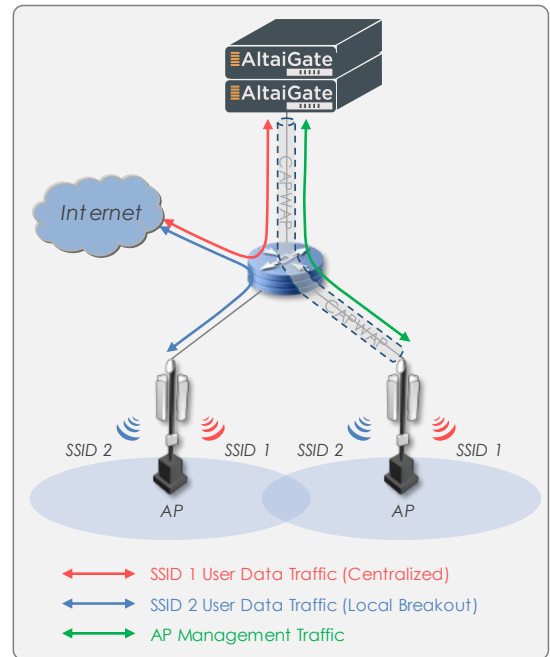
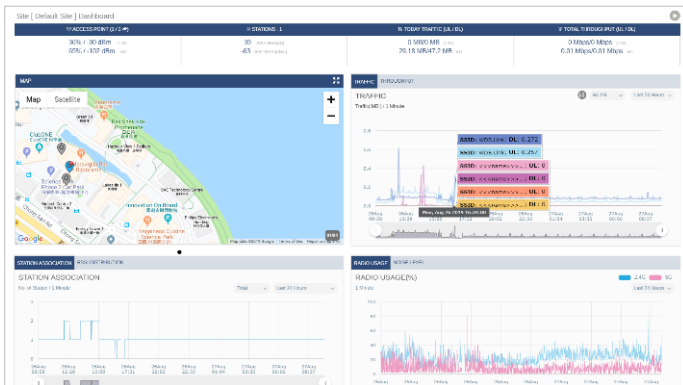


AltaiGate 210 is a WLAN controller specifically crafted for small to medium-sized networks. Equipped with a central processor housing four cores, each with two threads, the AltaiGate 210 empowers you to effortlessly manage up to 200 Altai Super WiFi access points and accommodate 4,000 client devices in a centralized forwarding network architecture.

Designed with ease of use in mind, the AltaiGate 210 simplifies the setup of your entire Wi-Fi network. Its intuitive web-based configuration interface ensures a smooth and hassle-free experience. Deployable within any Layer 2/3 network, the AltaiGate seamlessly connects with Altai Super WiFi access points, enabling a truly plug-and-play Wi-Fi network deployment.



Features and Benefits

- Best value in price/performance:**
 Support up to 200 APs and 4,000 client devices at an affordable cost. Expand your network capabilities and scale with ease.
- Effortless Network Management:**
 The intuitive web interface allows the administrators to set up and manage the Wi-Fi network much more easily; The centralized management feature further streamlines network administration, saving you time and effort.
- Comprehensive Access Services:**
 The AltaiGate 210 offers a complete range of Wi-Fi access services, including built-in support for RADIUS and captive portals. It effortlessly manages client onboarding and network access control for both enterprise and guest Wi-Fi networks, empowering you to deliver a seamless and secure Wi-Fi experience.
- Robust network security:**
 Strengthen your network's defenses with enterprise-grade 802.1X support. The AltaiGate 210 seamlessly integrates with various backend authentication databases like RADIUS and Active Directory, ensuring robust network security and protecting against unauthorized access.
- Advanced RF management:**
 Support rogue AP detection, auto channel selection and multi-AP steering to optimize network performance, minimize interference, and enhance overall wireless connectivity.
- Flexible deployment:**
 Support both centralized and distributed forwarding architectures. This versatility allows you to tailor your network setup to meet specific requirements, maximizing deployment flexibility.

Physical Specifications

- Dimensions (W x D x H) 1RU: 438 mm x 422 mm x 44 mm
- Weight 9.0 kg
- Power Supply 1+1 Redundant AC PSU Modules
- Power Consumption 300 W
- Network Interface
 - 4 x 1GbE ports (Data)
 - 1 x 1GbE port (Management)
 - 1 x 1GbE port (High Availability)
- Operating Temperature 0 °C to +40 °C
- Storage Temperature -20 °C to +70 °C
- Humidity 5% – 90% (Non-Condensing)

Network Capacity

- Managed APs 200 (Max.)
- Concurrent Users 4,000 (Max.)

Data Plane

- Architecture
 - Centralized Forwarding (Tunnelling)
 - Distributed Forwarding (Local Breakout)
- Data Tunnelling
 - Layer 2
 - Layer 3
- VLAN
 - Per WLAN Assignment (Access/Trunk)
 - Role-Based Assignment (Dynamic VLAN)
 - VLAN Pooling
 - Port-Based
- DHCP Server, DHCP Relay
- NAT

AP Management

- Site-Based Configuration and Batch Provisioning
- WLAN Scheduling
- Bulk Firmware Update Scheduling
- Radio Resource Management
- Google Map and Indoor Layout Import
- Real-Time AP/Station/Bridge Link Monitoring
- Bridge Link Topology Visualization
- Scheduled Reporting
- Alert Notification

Access Services

- Captive Portal
 - Portal Page Templates and HTTP/CSS Customizable Package
 - Click-Through, User Sign-Up and Standard Account Login
 - Guest Access Vouchers
 - MAC Caching
 - Targeted Advertising
- RADIUS
 - User Group and Account Management
 - Per-User QoS and Access Control
 - User Traffic Accounting

WLAN Security

- Standards
 - WPA/WPA2/WPA3
 - 802.11i
 - 802.11w (Management Frame Protection)
- Authentication
 - WPA/WPA2-Personal (PSK)
 - WPA/WPA2-Enterprise (802.1X/EAP)
 - WPA3-Personal (SAE)
 - WPA3-Enterprise (802.1X/EAP)
 - WEP
 - Open (Portal, MAC Authentication)
 - *Multi-PSK
 - Combination of Portal and PSK
 - Combination of MAC Authentication and PSK
- Encryption
 - WEP
 - TKIP
 - AES
- User Database
 - Internal RADIUS
 - External: RADIUS, Active Directory
- User Access Control
 - MAC Address-Based ACL
 - Layer 3/4 ACL
 - Layer 2 Isolation
- Wireless Intrusion Prevention System (WIPS)
 - Rogue AP/Client Detection
 - DoS Attack Prevention
 - AP Spoof Prevention
 - Password Guessing Protection

System Management

- Interfaces
 - Web
 - *SNMP v1/v2c/v3
 - *Restful API
- Diagnostics
 - Packet Capture
 - Event Log and System Log
 - User Authentication Log
 - Client Association History
- Access Management
 - Trusted IP
 - Multiple Login Tiers
 - Password and Account Lockout Policies
- Dual-Image Support
- 1+1 Redundancy with Auto-Synchronization

Certifications

- CE/FCC/Others
- RoHS2 Compliance

* Will be available in the future.

Product Ordering Information	
Standard Package	
Part No.: SD.GA-0210-00	AltaiGate 210 <ul style="list-style-type: none">• 1+1 Redundant AC Power Supply• Basic License for up to 50 Altai Access Points (Upgradable up to 200 Altai Access Points)
License Pack	
Part No.: SD.GA-LCS0-01	AltaiGate License Upgrade for 50 Altai Access Points
Contact Us	
• Email: sales@altaitechnologies.com or info@altaitechnologies.com	

AG210-PB-240226

The information contained herein is subject to change without prior notice.