



## Company Update

### Altai Enables Robotics Solution for Warehouses in India

ANSCER Robotics is a robotics company based in Bangalore, the Silicon Valley of India. Founded in 2020 in the midst of the COVID-19 pandemic, ANSCER's mission is to eliminate the common barriers in mobile robot deployment to allow businesses to easily reap the benefits of robotic technology and deliver value in any situation.

In order to provide the best solution to their customers, ANSCER has selected Altai Super WiFi solution, including industrial grade AP/CPE (VX200) and industrial PoE switch (MIS200P), to replace Phoenix Contact in their AMRs

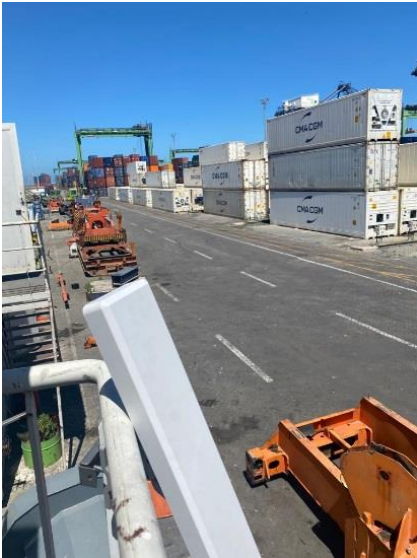


(autonomous mobile robots) for providing the critical wireless connectivity. The purpose-built compact size VX200 comes with advanced graphene coating housed in aluminium housing, which makes it perfect to be deployed inside AMR. Supporting millisecond roaming

and redundant connectivity makes Altai Super WiFi solution especially suitable for mission-critical applications such as warehouses or any industrial environment.

## Altai Strengthens Somaport with Super WiFi in Morocco

Somaport is the leading private port operator in Casablanca. The company operates a container terminal and a multi-purpose terminal. Somaport is part of the CMA CGM group since 2007, a French conglomerate which is the world's third largest container shipping company.



Altai's reputable flagship A8n Super WiFi base station and VX200 industrial grade CPE will be used in the project. Altai has been selected by the port operator due to its leading position in container port industry and the outstanding patented technology that outperforms any of its competitors. Once the deployment is completed, Somaport's operation process will be fully enhanced and strengthened.

## New GA Firmware Release

**Applicable Products : A8n family, A2/A3 family, C1n/C2s family and VX200**

A latest version of GA firmware (v2.2.1.1923) has been released. Our partners with a technical zone account can now download it from the technical zone or from the resources tab of Altai's official website. Below is a summary of the new features/improvements/bug fixes of the new firmware:

- Support new access point model: A2x
- Support new access point model: C1xn+
- Enhance proxy ARP feature to handle ARP requests from DS and wireless sides
- Enhance fast roaming experience for WPA-Personal and WPA-Enterprise clients
- Include various vulnerability fixes to resolve security loopholes



- Support long press of reset button during bootup time for factory reset
- Support configurable "Client Inactivity Timeout" per WLAN
- Support configurable "Minimum Data Rate Trigger Time" and "Low-Rate Packet Count Threshold" per WLAN for client connection
- And many more fixes and improvements

Please connect with Altai to learn more details.

Contact Altai by Email → [info@altaitechnologies.com](mailto:info@altaitechnologies.com)

Join our forum today! → [facebook.com/groups/652109398848119](https://facebook.com/groups/652109398848119)

**Follow Altai on social media!**

