



## Overview

The Lheidli T'enneh First Nation, located on the outskirts of Prince George in Northern British Columbia, enjoys beautiful vistas and bountiful natural resources, but has lacked high speed and affordable network access for their student population and the community at large.

While the closest Telus fiber line available is terminated ¾ mile away from the Lheidli band office and surrounding homes, the always critical last-mile connectivity was hindered by significant geographic obstructions and, of course, funding challenges.

Chief Dolleen Logan shared, "It was frustrating having a Telus fiber termination point sitting within a mile of our band office, but the Nechaho River and a significant tree-lined hill sat between us and that fiber." As a result, band members were using their cellular phones as Wi-Fi hot spots and incurring outrageous monthly cell bills.

With the onset of COVID-19 the four public post-secondary institutions in northern British Columbia, spearheaded by UNBC, approached the Lheidli T'enneh band leadership to assist with organizing funding in support of its efforts to drive delivery of "last mile" network connectivity for students in underserved first nation communities. UNBC Alumnus, Ken Leung, now head of global business development for Altai Technologies, learned of this initiative and shared how a single Altai Super WiFi base can support connectivity for WiFi enabled devices (smart phones, tablets, laptops... etc) over distances of up to 1.7km.

After sharing details with the Band leadership about Super WiFi's ability to quickly and cost-effectively deliver the network access they so desperately needed, the decision was made to move forward. UNBC worked with the other northern BC postsecondary institution Presidents' Covid-19 response project to guide the band through securing private funding assistance. After Krysp Wireless, Altai's master distributor for the US and Canada, received sign-off on their network design, the deployment process commenced and was completed in less than a week - despite torrential down pours.

**Customer Name:**

The Lheidli T'enneh First Nation  
Ascentech (System Integrator)

**Deployment Location:**

Prince George, Northern British  
Columbia

**Application:**

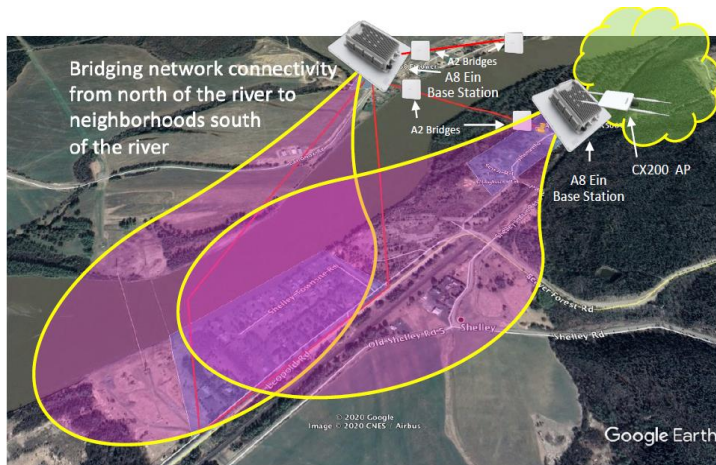
broadband wireless  
connectivity for students and  
the community

**Products used:**

A8-Ein

## The Challenge

- Large coverage area required
- Environment surrounded by plantations that block radio signal
- Network shared by large number of users
- Lack of installation sites



## The Solution

Altai's Super WiFi technology was the ideal solution for bridging this connectivity gap and Lheidli T'enneh First Nation's deployment was completed in October of 2020 by Krysp Wireless with assistance from MicroAge – Krysp's, Northern BC reseller partner. Residents now have robust wireless network connectivity both indoors and outdoors throughout the community.

Altai Super WiFi is delivering connectivity for over 80 homes and the Lheidli T'enneh surrounding community over distances of up to three quarters of a mile with just 3 Super WiFi base stations and 4 wireless bridge units.

Ken Leung, Altai's VP of Business Development, said, "It is especially gratifying to return to a region where I lived, worked and attended university and see my company's technology having such a positive impact on historically underserved BC communities."

Beau Peters, Krysp Wireless President shared, "UNBC, Lheidli T'enneh's leadership and our Northern BC reseller - MicroAge – were terrific partners in making this project a reality and should serve as a model for other Indigenous communities across Canada looking to pursue deployment of reliable, cost-effective network access."



## About Altai

Altai Technologies is a leading supplier of carrier-grade Wi-Fi products and technologies with a distribution network reaching 100 countries. Altai Super WiFi is the leading solution for vertical industrial markets, covering over 200 container ports, manufacturing plants and warehouses globally.

The Altai Super WiFi Solution includes a complete portfolio of indoor and outdoor products for carriers, WISPs, and enterprises to support a wide range of applications such as mobile data off load, public access, WLAN access, and backhaul.

Utilizing patented smart antenna technology, as well as a cloud-based management system called AltaiCare, the Altai Super WiFi Solution is designed from the ground up to deliver Wi-Fi networks that have unprecedented performance, reliability, scalability, and manageability.

## Contact Us

Headquarters  
Unit 209, 2/F, Lakeside 2, 10 Science Park  
West Avenue, HK Science Park, Shatin,  
Hong Kong

Phone: +852 3758 6000  
Fax: +852 2607 4021  
Email: [info@altaitechnologies.com](mailto:info@altaitechnologies.com)

[www.altaittechnologiaies.com](http://www.altaittechnologiaies.com)