

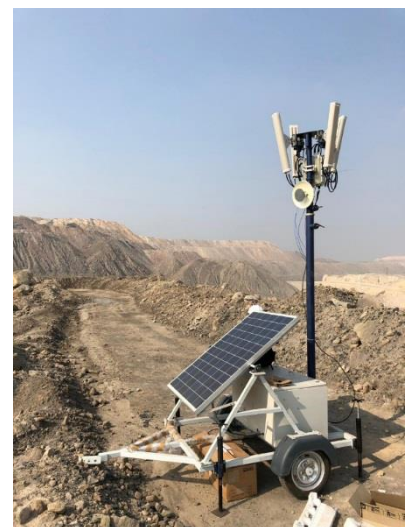


Company Update

Altai Selected by Sasan Ultra Mega Power Project

Sasan Ultra Mega Power Plant or Sasan UMPP is one of the four Ultra Mega Power Projects planned by the Ministry of Power, Government of India. It is located in Sasan village of Singrauli, Madhya Pradesh. Sasan UMPP is among the world's largest integrated power generation and coal mine project.

Altai's mission in this project is to provide connectivity between earthmovers and central server in ballasting fields. The tough environment is the major challenge of this deployment. Altai has competed against some of the major vendors in telecom market and won the project due to its outstanding smart antenna technology. Comparing to its competitor that proposed a solution of 90 access points, Altai's solution only required 20 APs and was able to provide a more reliable network coverage. Moreover, Altai's local system integrator provided Sasan UMPP more flexibility with solar power and tow cart.



Altai's New Partner in Vietnam

Vietnamese technical services company, TSM, has recently become Altai's distributor in Vietnam. TSM always position themselves as the pioneer in applying new generation solutions with the latest technologies in the field of power, information technology, fiber



TSM

- ALTAI- Super Wifi
- Altai A2e WiFi Access Point
- Altai A3-Ei Dual-Band Access Point
- Altai A8n (ac) Super WiFi Base Station
- Altai B5 Wireless PTP Bridge
- AltaiGate 200 Smart WLAN Controller
- Case Study



network infrastructure, and printed circuit processing equipment. The company also has a very extensive channels with system integrators in various industries.

Having been developing business in Vietnam for several years, Altai has already built a good reputation among

the wireless solution industry. With the new distributor in place, Altai expects to increase its exposure to potential customers from various industrial sectors and enhance market penetration in Vietnam.

Indonesia BAKTI Endorsed Altai Super WiFi

Connectivity has never been as important as now when Covid-19 has kept us all in distance, especially in remote areas.

Altai is very proud to be involved in connecting the unconnected in Indonesia with its patented long range Super WiFi technology. As highlighted in the local TV news, Altai's technology has been endorsed by both The Minister of Communication and Information, Johnny Plate, and The Head of Lastmile and Backhaul Networks Division at the Telecommunication and Information Accessibility Agency (BAKTI), Feriandi Mirza.

During a site visit to one of the Super WiFi sites at East Nusa Tenggara, the minister said that "Super WiFi should be used as much as possible for economic, social, political, and defense interests." In addition, Feriandi Mirza from BAKTI echoed that "Generally, outdoor Wi-Fi may only be able to reach about 50 meters optimally, but Super WiFi can reach 500 meters."



Product News

AltaiGate Update

The latest version of Altai's enterprise-grade WLAN controller, AltaiGate, has been released with the following new features.

AltaiGate v1.2.0

- Provides client/station list UI on both site and AP level to provide a more holistic way to keep track of client connections
- Provides client/station log to retrieve association and statistics history
- Enhances admin account security including password policies, account lockout policies, and account expiry support
- Supports admin account retrieval via email and verification code
- Supports WLAN creation wizard for quick & easy setup on various authentication types
- Enhances site default configuration by adding trust IP list and admin password configuration for APs
- Supports dynamic VLAN
- Supports RADIUS Proxy to external RADIUS server for user authentication
- Supports Active Directory user authentication with Window domain controller
- Supports Layer 2 portal in which AltaiGate performs as portal gateway for client connection
- Supports DHCP relay
- Supports 5-tuple Layer 3 network ACL
- Supports essential network diagnostic tools including ping and packet capture
- Supports scheduled system backup and remote upload
- Supports recovery login for hardware reset in case of admin login failure



Contact Altai by Email → info@altaitechnologies.com

Please join our forum today! → facebook.com/groups/652109398848119

Follow Altai on social media!



facebook.com/altai.technologies/



linkedin.com/company/31040932/

