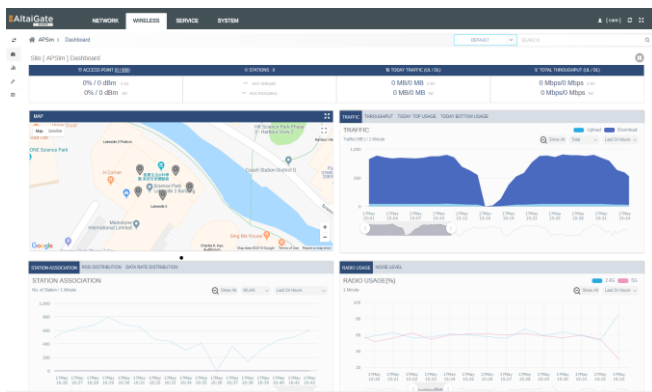


AltaiCare in a Box

The AltaiCare Appliance is a new class of affordable and versatile WLAN management platform designed for small and medium-sized business. Powered by an optimized and virtualized version of the AltaiCare, it addresses the network challenges faced by Wi-Fi network deployment of 100 APs or fewer.

Plug-and-Play Wi-Fi Deployment

Wi-Fi network setup has never been easier. Simply unpack and plug APs to the network. Once an AP is connected, the configuration and firmware are automatically downloaded from the AltaiCare Appliance. Thus, an entire Wi-Fi network can be up and running in minutes. With the AltaiCare Appliance's web-based user interface, much complexity is hidden from the user, allowing him or her to concentrate on the information needed to accomplish any task.



Configuration changes can be applied to multiple APs or the entire network. An intuitive dashboard provides a comprehensive network snapshot and allows IT staffs to trouble-shoot any problems easily.



Smart Access Management Options

The AltaiCare Appliance offers comprehensive authentication methods to manage Wi-Fi accessibility. It provides a built-in RADIUS server and a captive portal server for facilitating small and medium-sized businesses in deploying secured employee and guest access services.

Advertising Engine for Wi-Fi Monetization

For hotels, malls, retail, restaurants and venues, the Advertising Engine of AltaiCare Appliance provides a powerful yet simple content management platform for organizing and selectively advertising content to users depending on the AP location and demographics. Moreover, real-time analytics, rich dashboard, and reporting of the AltaiCare Appliance mean that marketers can leverage big data to engage customers effectively to promote their business.

Key Features and Benefits

- **Best value in price/performance** Support up to 100 APs and 1,000 client devices at an affordable cost.
- **Ease of Use** Web-based configuration interface allows Wi-Fi network to be set up quickly; Altai Super WiFi APs discover the AltaiGate automatically.
- **Smart Access Services** Smart access features such as hotspot, guest access, social media login such as Facebook and Google allows quick setup for secured private network access or easy monetization of hotspot services.
- **Intelligent network security** Support enterprise-grade 802.1x with any backend authentication databases such as RADIUS and Active Directory.
- **Ease of Use** Zero configuration allows a non-technical person to simply unpack and plug APs to Wi-Fi network.
- **Location Based Advertising** AltaiCare Appliance's Advertising Engine enables small business to turn their Wi-Fi network into a new marketing medium which can be used to promote and sell their products and services.

Physical Specifications

- Dimensions 155 mm (W) x 92 mm (D) x 32 mm (H)
- Weight 0.5 kg
- Power 12 VDC AC/DC Adapter
- Network Interface 1 x GE Port (Data)
1 x GE Port (Management)
- Op. Temperature 0 °C to 40°C
- Storage Temperature -20 °C to 60°C
- Humidity 10 to 80% @ 40 °C, Non-Condensing

Capacity

- Managed APs 100 (Max.)
- WLANs 250 (Max.)
- Concurrent Clients 1,000 (Max.)

AP Management

- Interface Web
CLI
- AP Provisioning Batch provisioning
Configuration checking
Auto software upgrade
Supported
- Network Health Monitoring and Trouble-shooting Supported
- Historical Report
- RF Management Auto channel selection*
Auto power control*
Interference detection*
Client load balancing*

Access Services

- Hotspot Hotspot 2.0*
WISPr*
- Captive Portal Guest login
Sociallogin (Facebook and Google)
User sign-Up
Prepaid / subscription login
Email login
SMS login*
Supported*
- CoA Advertisement click / view count
Login time distribution
User account history
Supported*
- Statistics Demographic Targeting
Device Targeting*
Geo-Targeting
- Monthly User Report
- Advertising Engine

Quality of Service

- 802.11e/WMM Supported
- Traffic Prioritization TOS-based
VLAN-based
- Bandwidth Control Per user
Per WLAN

Security

- Standards WPA
WPA2
802.11i
- Encryption WEP
TKIP
AES
- Authentication 802.1x
MAC address-based
- User Database Internal
External: RADIUS, Active Directory
- User Access Control L2 (MAC address-based)
L3/4 (IP and protocol-based)
L2 client isolation
- WIPS Rogue AP detection*
DoS attack prevention*
AP spoofing detection*
Ad hoc detection*
Password guessing protection*

Wireless Standards

- IEEE 802.11a, 802.11b, 802.11g,
802.11n, 802.11ac, 802.11r,
802.11k, 802.11v, 802.11d,
802.11e, 802.11u*

Certification

- CE / FCC / Others
- RoHS2 Compliance

Product Ordering Information

AltaiCare Appliance (Part No.: SD.AA-0100-00)

- AltaiCare Appliance with 12 VDC AC/DC adapter, licensed for up to 100 Altai access points

Contact Us

- Email: sales@altaitechnologies.com

ACAPL-PB-190430

**Will be available in the future*

Note: Specifications are subject to change without notice