

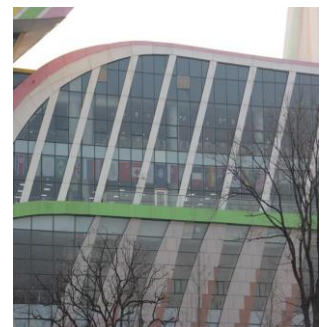


Company Update

Building a Wi-Fi Platform for Smart City Applications

With an aim to make people's lives more convenient and to boost the local economy, the municipal government of a Northern China city has the plan to adopt different applications in the city to become a smart city.

In order to do so, a fully connected network is the critical enabler for these smart city applications. Trenching and wiring a city can be very expensive, wireless transmission is often the best and fastest way to connect the city.



Less access points are required per sq.m. due to Altai's long range technologies

The municipal government has assigned a leading solution provider to design and build the Wi-Fi network for its smart city project. Since it required large Wi-Fi coverage and high capacity, the solution provider has chosen Altai Super WiFi Solution due to its superior long range and outstanding performance.

Three prime locations in the city center were selected as the pilot sites of this smart city project. The area included a convention center (indoor Wi-Fi) and two public squares. The free Wi-Fi services were launched earlier this year and it provides free internet connectivity to local residents and visitors in these areas by using 23 C1n's and 7 A8-Ein's. The wireless networks can support up to 2,000 concurrent users in total with an average speed of 1Mbps per users.

Owing to the superior network coverage of the patented Altai long range technologies less access points are required per square kilometer, resulting in lower upfront capital investment and lower ongoing operating cost.

Altai Super WiFi Makes Smart Farming Possible

The need for high speed internet for regional agricultural based business's is critical, not only for the business operations but also for the use by the residents, family and staff for social through to educational purposes. This Homestead in Australia is well known to those in the industry as a top flight breeder of Bulls, specializing in artificial breeding.



The Altai C1n solution has further extended the NBN signal to the farm

Previously the only internet available on the property, apart from patchy mobile coverage, was via a cellular router connected back to the main homestead via a low end point to point bridge. This solution was both expensive and unreliable. A dwelling on the property was deemed suitable for the National Broadband Network ("NBN") fixed wireless service. The bull breeder invited AETV Systems, a leading system integrator in the region to further extend the NBN signal to the farm.

After the site survey, the solution required a combination of fixed wireless, wireless bridges, solar powered poles and long range Wi-Fi access points. Special allowances were made for 2 x solar 10 m powered poles with sufficient battery backup to operate for a number of days without sunshine. The incumbent cellular router is on standby in the event of an outage with the NBN or any of the relay points relying on solar/battery.

C1xan's are used for the long distance bridges while C1an's are used for short distance bridges. C1n's are deployed for long range Wi-Fi access. The installation was completed in 3 days. All buildings on the property are now linked via a high speed, low latency wireless network and enjoy the benefits of the NBN fixed wireless service.

Altai Super WiFi Unwires Over 80% Chilean Ports

Chile is the world's number one copper exporter, and with export volume reaching all-time highs, the ports in Chile rank among the top 20 busiest ports in South America. In order to maintain a high standard of efficiency, over 80% of the seaports including Arica, Antofagasta, Angamos, San Antonio, Valparaiso, San Vicente Terminal Internacional



have deployed Altai Super WiFi to increase the overall operations efficiency. All these wireless broadband networks are designed and built

Less access points are required per sq.m. due to Altai's long range technologies

by TEKSO, the leading system integrator in South America.

TEKSO works closely with ports to create comprehensive business solutions that leverage wireless technology. The ports benefit not only from huge performance gains in their daily logistic operations, but also real-time applications such as video streaming, surveillance and connections to applications like Citrix, Navis and SAP. Real time visibility allows them to address and prevent issues before they become problems.

Utilizing patented smart antenna technologies, the Altai Super WiFi network provides large area wireless connectivity for the port's operations control. It allows users to track and monitor the mobile clients in the container port. The Wi-Fi network also supports multi-media applications, therefore users can work remotely at the crane, container stack, warehouses and vessel areas using their handheld and mobile terminals. The overall port efficiency has significantly improved with Altai Super WiFi solutions.

Powertec Selects Altai Products for its Underground Communication System

Powertec, a leading telecommunications distributor in Australia has selected Altai Super WiFi products for its advanced underground communication system ("UCS"). The UCS is a pre-configured, portable, IP waterproof rated solution which generates a closed loop IP network above and below the ground allowing staff to take

advantage of voice and data applications. Altai Super WiFi products are used due to their high quality, carrier grade and worldwide proven performance to increase capacity and extend coverage.



Real-time information makes workforce not only contactable but also visible and traceable

This underground Wi-Fi enables staff to use smart devices for data, video, mapping, and have immediate access to information. Powertec's advanced UCS provides operators and customers the ability to achieve voice and data underground connectivity, and at the same time reduce business costs, increase productivity and improved staff safety.

Altai Super WiFi Showcased at Conferences in South America

Altai has recently participated events held in South America to introduce the latest Super WiFi solutions and share deployment cases. DMS Wireless in Peru, a leading local system integrator hosted its own workshop on Aug 17 for enterprises customers. The workshop mainly focused on the wireless applications for challenging, harsh environments such as airport, terminal ports etc. Over 200 industry players attended the workshop.



Altai @ ANDICOM, Colombia

Altai was also invited by Maicrotel, a leading system integrator, to conduct a presentation at ANDICOM 2016 in Cartagena, Colombia (Aug 31 – Sept 2). Altai showcased its full series of 802.11ac products at the show with visitors showing strong interest for the new solutions and they exchanged their experience and insight on the wireless equipment market.

Altai Hosted Webinar for New Product Pre-Launch

Based on the attendance level and positive feedback from the last webinar, Altai hosted another webinar on Sept 22 for partners in Asia, Middle East and Africa. During the webinar, Altai had introduced the features of the latest 802.11ac products such as the A2c and C2s. The on-premises AltaiCare real-time demonstration was also the highlight of the webinar. The demonstration showed all the key features of AltaiCare and how to manage the Wi-Fi network with fingertips. The feedback from the attendees was positive and they are looking forward to the next Altai webinar

Upcoming Event

GITEX 2016

Date: Oct 16 – 20, 2016

Venue: Booth#Z-K56, Gulfcomm, Dubai World Trade Center, Dubai

Qualcomm 4G/5G Summit Expo

Date: Oct 18, 2016 (6pm to 9 pm)

Venue: Sky 100, 100th floor, ICC Building, Hong Kong

Partner Workshop (@ Africacom 2016)

Date: Nov 15 – 17, 2016

Venue: Absa Center, Cape Town, South Africa

