



## Company Update

### Altai Super WiFi Enhances Airport Operations Efficiency

With annual passenger traffic of over 57 million, the Istanbul Ataturk Airport is the 15<sup>th</sup> busiest airport in the world. The Istanbul Ataturk Airport hit an all-time high in July 2015 with 1,389 airplane movements at the airport.



*Installed Altai A8-Ein on lamppost in the apron areas*

To cope with the increasing traffic and to ensure the smooth operation of this transportation hub, the official airport ground services provider of Istanbul Ataturk Airport --- Turkish Ground Services ("TGS") decided to build a wireless network for the apron areas, connecting all the ground services applications such as data transmission, mobile surveillance, VoIP, luggage tracking etc. TGS had appointed Net Iletisim Teknoloji, the leading distributor & system integrator in the region to design and build the wireless network for them.

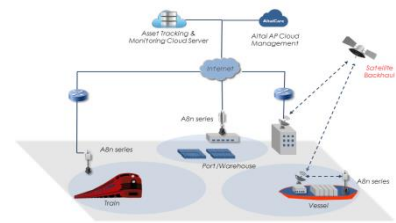
Net Iletisim Teknoloji shortlisted Alvarion, InfiNet and Altai to provide product trial test. Altai won the trial and was selected to provide its' Super WiFi solution for TGS due to the outstanding performance of the Altai A8-Ein to provide WiFi coverage over long distances.

Forty A8-Ein were mounted on poles and lampposts in the apron areas for access coverage while some A2s were installed on top of the ground services vehicles to connect with cameras for mobile surveillance. The access controller is used for dynamic VLAN assignment as well as AP management.

The wireless broadband network covers 100% of the required areas with redundancy. The test data showed an average -65dBm signal strength all the times so that the ground support staff can always be connected to provide ground services in the apron areas.

## Total Solution for Wireless Asset Tracking and Monitoring

It is important for goods to be delivered on time and in good condition. However, the long distance over land or sea will risk the goods of being damaged or stolen. Altai's wireless tracking solution enables shippers to monitor their goods' movement and conditions from the source to destination. Shippers can set its own configurable parametric alarms to alert and notify in real-time of important events on a cloud-based platform via any connected devices such as laptops, tablets etc.



Altai offers multi-mode communications

Altai offers multiple-mode communications and fail-over to ensure connectivity at all times so that the wireless tag on the cargo or container can send real-time data to cloud-based server. On land, Altai sets up access points along railways and roads to connect the wireless tags on cargo or containers to update their status to server. On sea, traditional terrestrial backhaul is not available so satellite backhaul is utilized. Combining the satellite backhaul with Altai Super WiFi, the containers stay connected for remote tracking and monitoring even they are on the sailing vessel. The Altai Super WiFi network in port will allow the wireless tags on the vehicles to have wireless access even when they are miles away from the port. Furthermore, AltaiCare, a zero configuration cloud-based management solution helps network operators to manage their WiFi networks at fingertips.

The Altai wireless tracking & monitoring solution will greatly enhance the efficiencies of the logistics industry and reduce loss and damage during the shipping process. Data collected can also be used for analysis, formulating new strategies.

### Altai U1 Special Promotion – Get 82% Off Today!

Altai has recently launched a special promotion for its U1 Super WiFi USB Client – with saving up to 82%. The Altai U1 is designed for increasing signal strength, especially suitable for areas that are difficult to get WiFi signal. Its portable and compact design makes it an ideal solution for solving weak WiFi signal problems.

**SPECIAL PROMOTION**

**82% OFF!**

Altai U1 Super WiFi USB Client

Original: US\$55

**Special Offer: US\$9.99\*\***

**Features:**

- 802.11n capable, powered by laptop using USB cable
- Extend outdoor WiFi coverage into indoor areas
- Increase WiFi signal strength (transmit & receive)
- Support up to Windows 8 32-bit
- Portable & compact (177x80x18mm, 200g)

\*\* 100% prepayment or work HK. Terms & conditions apply, please contact us for details.



## Company Event

### Altai @ ANDICOM in Colombia

Altai's participation at the 30<sup>th</sup> ANDICOM in Cartagena, Colombia was a great success. This 3-day event attracted over 2,800 IT/Telecom experts and decision makers in the region to the show.

Partnered together with W2P, a leading distributor in Colombia, Altai was the official WiFi sponsor of ANDICOM. Free WiFi services were available in the exhibition, the lounge and swimming pool of the Intercontinental Hotel (where the inauguration ceremony held) and seven hotel shuttle buses. At peak times, there were over 500 concurrent users connected with Altai Super WiFi.

Being the leading WiFi solution provider, Javier Mochnacs, Regional Director of Latin America and Carribbean of Altai was invited to give a presentation regarding its successful island-wide deployment in Jamaica and an overview on recent WiFi market trends. Altai also showcased its latest Super WiFi products and solutions in the booth with W2P. The feedbacks from visitors on Altai WiFi services and products were very positive.



Altai A2 and A3-Ei were installed on the rooftop to provide outdoor coverage



Altai was invited to speak at the conference

### Altai @ Smart Cities Forum & Qualcomm Summit in Hong Kong

Altai recently participated in various events in Hong Kong. Altai was invited to speak at a smart cities forum held on August 19 in Hong Kong. At the forum, Altai presented the crucial role of free WiFi connections in a smart city can play, and the massive difference of area-wide free connectivity that can help to stimulate a city development. Meanwhile, Altai showcased its latest 802.11ac products in Qualcomm 3G/LTE Summit held on Sept 15. Many operators showed great interest in Altai's Super WiFi products.



A wonderful night at the Qualcomm Summit

### Altai to Exhibit at GITEX in Dubai

Altai will showcase its latest indoor and outdoor Super WiFi products at GITEX 2015 (Oct 18-22) in Dubai International Convention & Exhibition Center, Sheikh Rashid Hall, booth#SR-N6 .

