



Overview

Globalization has had a dramatic impact on the logistics sector. From receiving to inventory to outbound distribution, warehouses increasingly rely on wireless technologies to streamline the operations and enhance overall productivity by fulfilling orders more accurately and quickly than before.

Being the leading conglomerate in China, the enterprise decided to adopt the latest wireless technologies to convert its grain depot to a smart warehouse operation.

The outdoor wireless network was designed and built by a leading wireless system integrator in China using Altai Super WiFi solution. Installed on the rooftop of the core building, the Altai A8n Base Station provided large area Wi-Fi coverage while some C1n's were installed outside the walls of warehouses to fill the gaps in wireless coverage, especially the rows between different warehouse blocks.

From truck weighing, goods loading to custom clearance, all processes are now connected with the wireless network to enhance the overall efficiency.

Customer Name:

A famous conglomerate in China

Deployment Location:

Northern China

Application:

Private network for interconnecting all the warehouse applications

Products used:

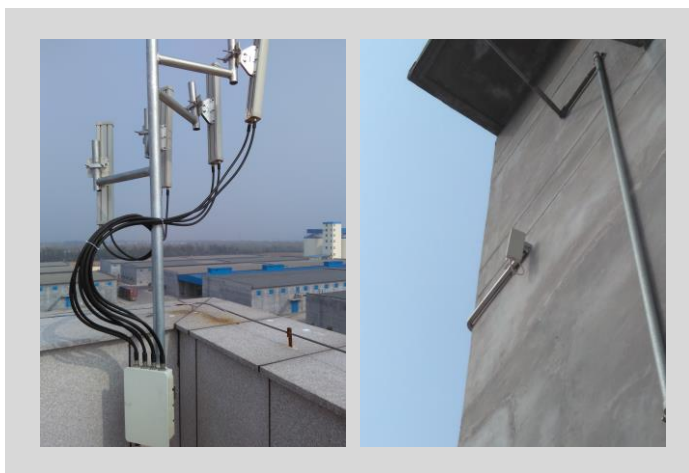
Altai A8n Base Station and C1n

Result:

The wireless network covers the outdoor areas with all the applications connected to the network

The Challenge

- The area is dense with narrow corridors among the building blocks
- Lack of Ethernet and tall buildings for installation
- Moving trucks, forklifts and metallic goods can affect Wi-Fi signal and network coverage
- Owing to the size of the warehouse, having too many access points or maxing out the transmit power to provide large area coverage can generate interference between AP's on the same channel



The Solution

Co-located with existing 2G/3G cell sites, one Altai A8n was installed on the rooftop of the core building to provide full wireless coverage. With patented 4 x dual slant smart antenna technologies, the A8n provides flexible and large horizontal beamwidth (70 to 360-degree) coverage. The Altai AirFi algorithm also helps to optimize the throughput to ensure network stability and performance.

A few Altai C1n's were mounted on the side-wall of warehouses, and they were configured as AP/CPE pairs for extending Wi-Fi coverage from the A8n. Connected with the C1n, the A8n provides Wi-Fi coverage up to 2.7km (LOS).

The Result

Even though the warehouse environment is very dynamic, the Altai Super WiFi solution is able to increase the average signal-to-noise ratio to improve the signal coverage and data throughput performance. The co-location of the base station with an existing 2G/3G cell site has significantly reduced the wirina and installation cost.

About Altai

Altai Technologies is a leading supplier of carrier-grade WiFi products and technologies with a distribution network reaching 100 countries. Altai Super WiFi is also the leading solution for vertical industrial markets, covering over 180 terminal ports and airports globally.

The Altai Super WiFi Solution includes a complete portfolio of indoor and outdoor products for carriers, WISPs, and enterprises to support a wide range of applications such as mobile data offload, public access, WLAN access, and backhaul.

Utilizing patented smart antenna technology, as well as a cloud-based management system called AltaiCare, the Altai Super WiFi Solution is designed from the ground up to deliver WiFi networks that have unprecedented performance, reliability, scalability, and manageability.

Contact Us

Headquarters
Unit 209, 2/F, Lakeside 2, 10 Science Park
West Avenue, HK Science Park, Shatin,
Hong Kong

Phone: +852 3758 6000
Fax: +852 2607 4021
Email: info@altaitechnologies.com

www.altaittechnologies.com