



ALTAI U1
SUPER WIFI USB CLIENT

QUICK SETUP GUIDE

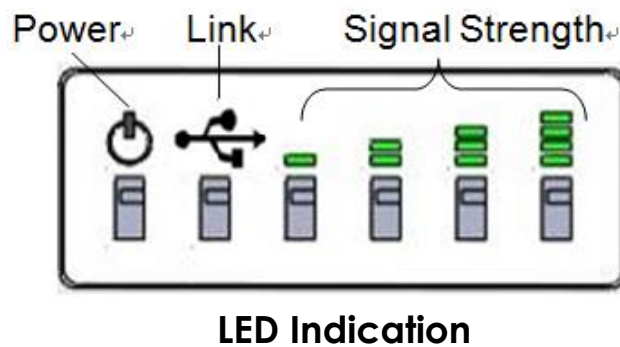
Version 1.2
Date: May, 2016

Package Contents

1. Altai U1 Super WiFi USB Client
2. USB Cable (60cm)
3. Altai U1 Super WiFi USB Client Drivers

Minimum System Requirements

1. Desktop or laptop PC with 1GHz or faster processor and 512 MB or more RAM.
2. Available USB 2.0 port.
3. Windows: XP SP3 32-bit/64-bit, Win 7 32-bit / 64-bit, Win8/8.1 32bit/64bit, Win10 32bit/64bit.



Cable Connection

4. Connect micro-USB connector of the USB cable to U1.
 5. Connect the other end of the USB cable to the USB port of your computer.
- Because U1 gets its power from computer, no external power supply is needed.
The power LED should light up when U1 is plugged in and the PC is on.



Download and Support

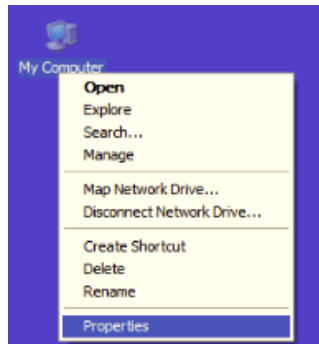
Latest software and document are available at the following link

http://www.altatechnologies.com/?page_id=245

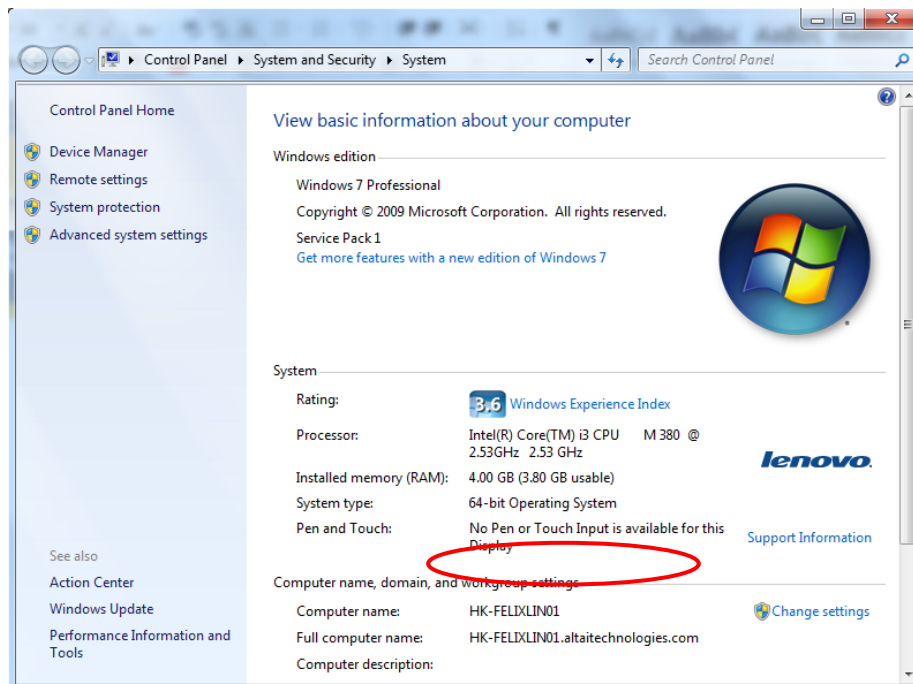
Technical Support: u1support@altatechnologies.com

Find out the OS of Your Computer

The installation and configuration procedures are different depending on the OS of your computer. To find out the OS of your computer, right-click “**My Computer**”, choose “**Properties**”.



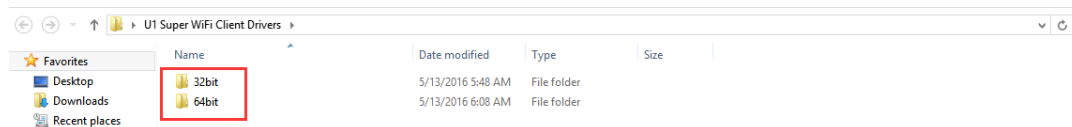
Please note Windows has 32 bit version and 64 bit version. You can check the version information below:



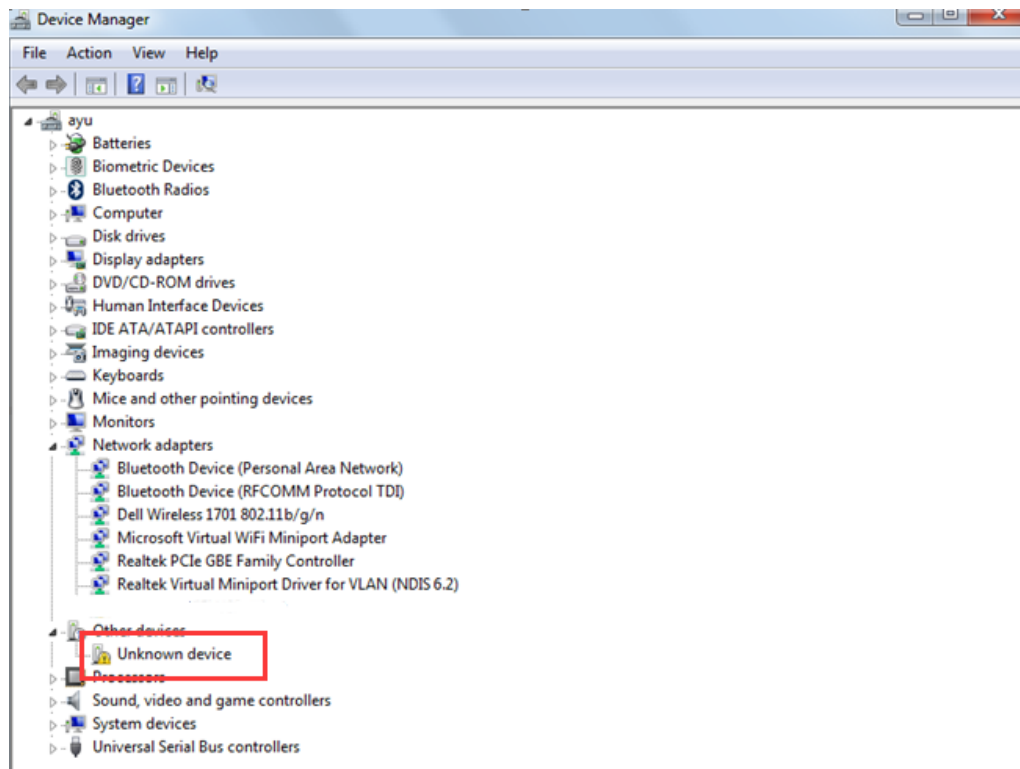
U1 Driver Installation

1. Download the U1 installer for Altai technologies website and put them on the desktop.

http://www.altaitكنولوجий.com/?page_id=3317

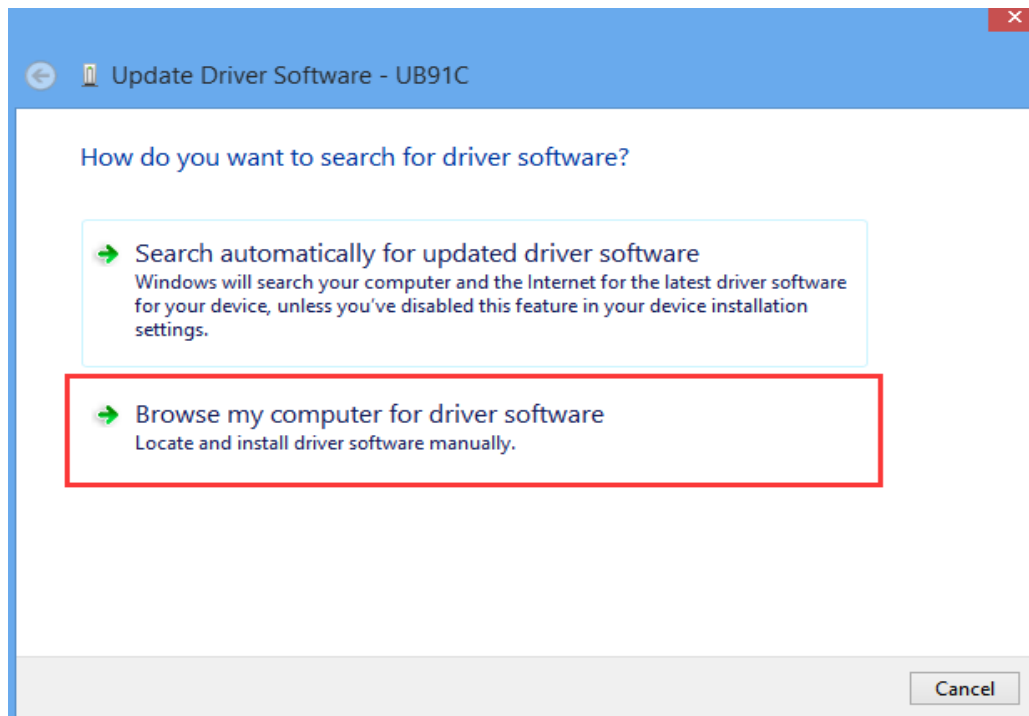
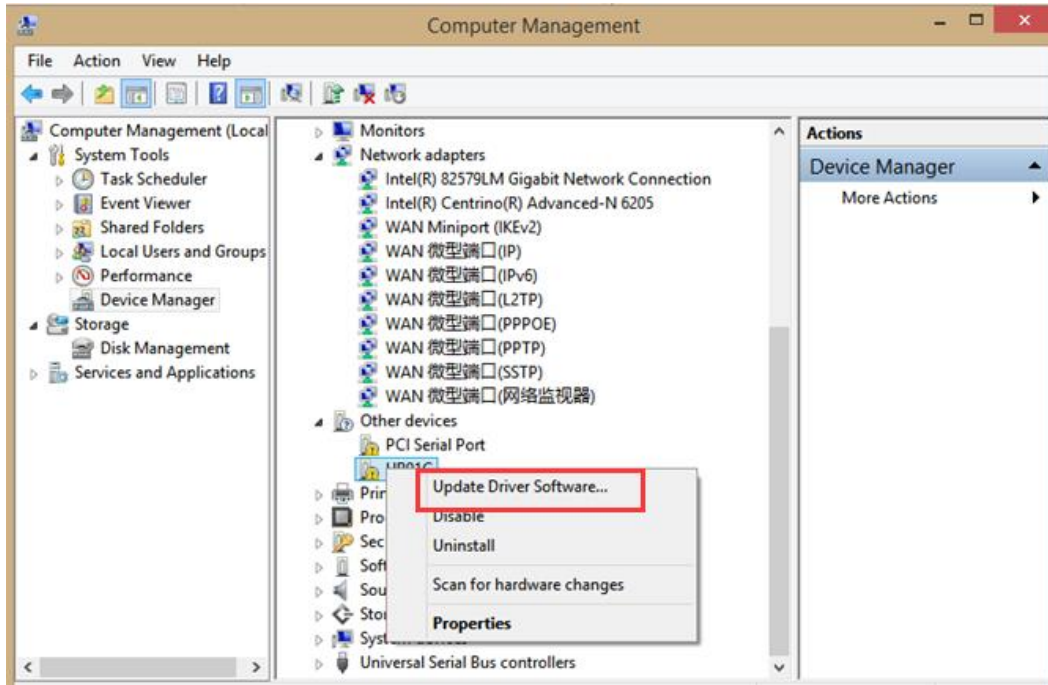


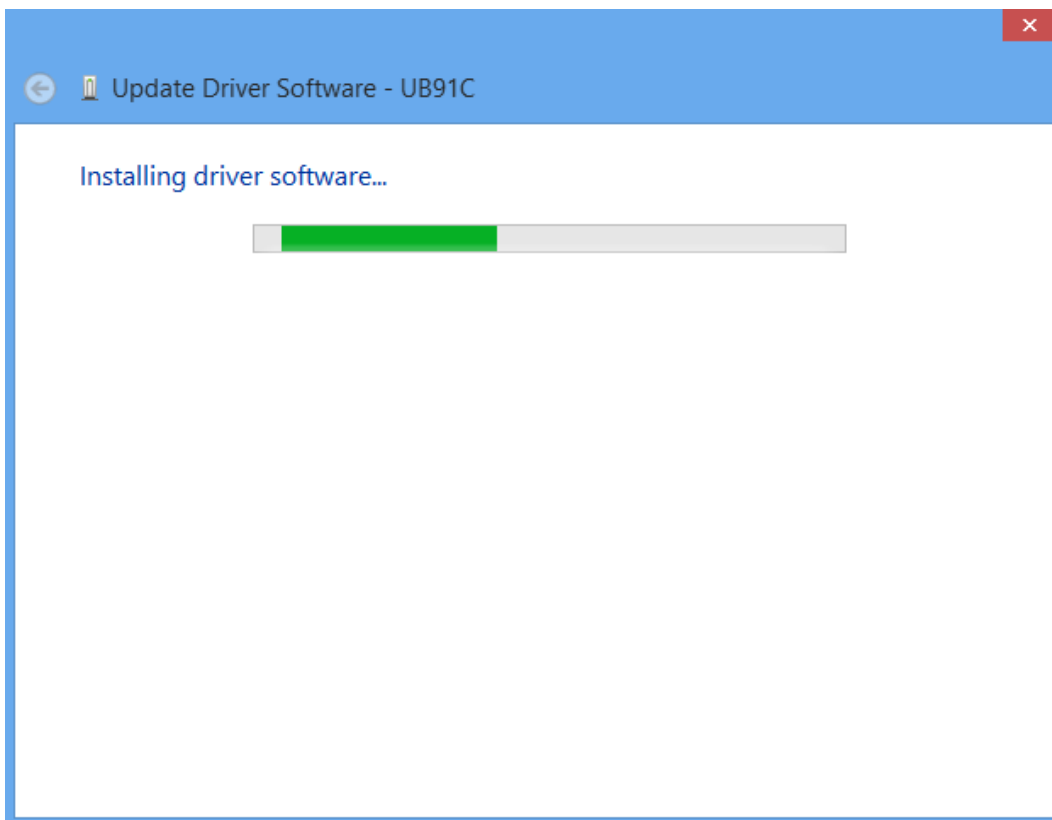
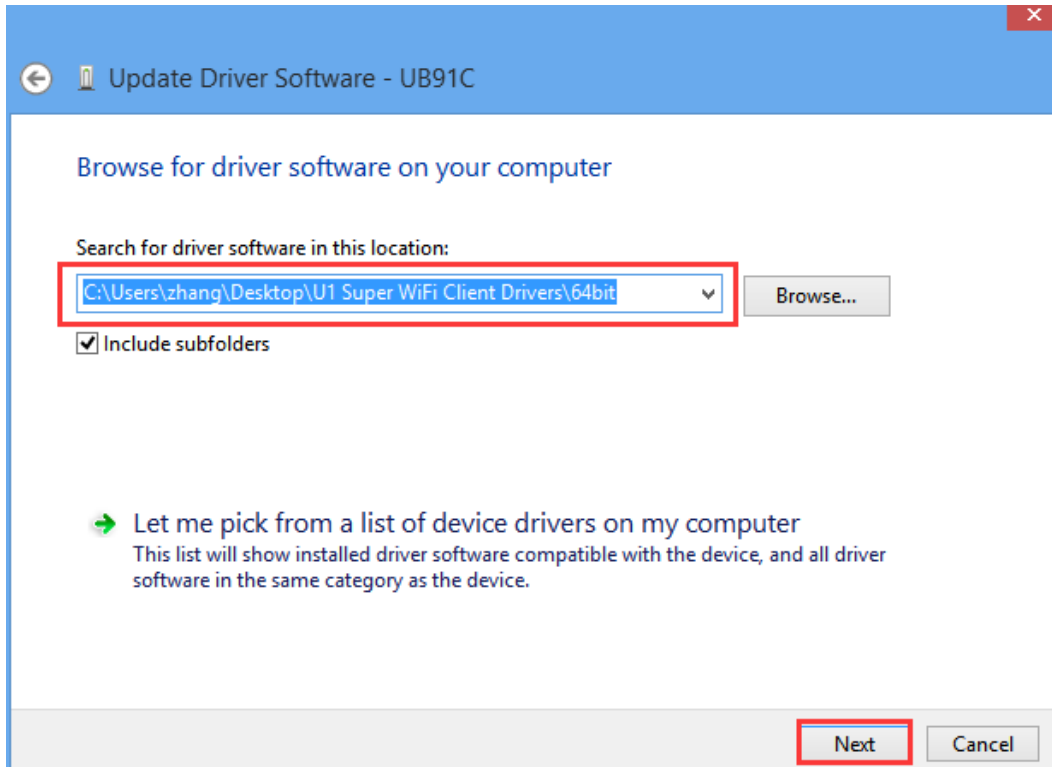
2. Connect U1 to the computer and go to “**This PC**”— “**Manage**”— “**Device Manager**” to check if a new icon raised up which mean the computer already detect the U1 as unsupported device because the driver not installed.

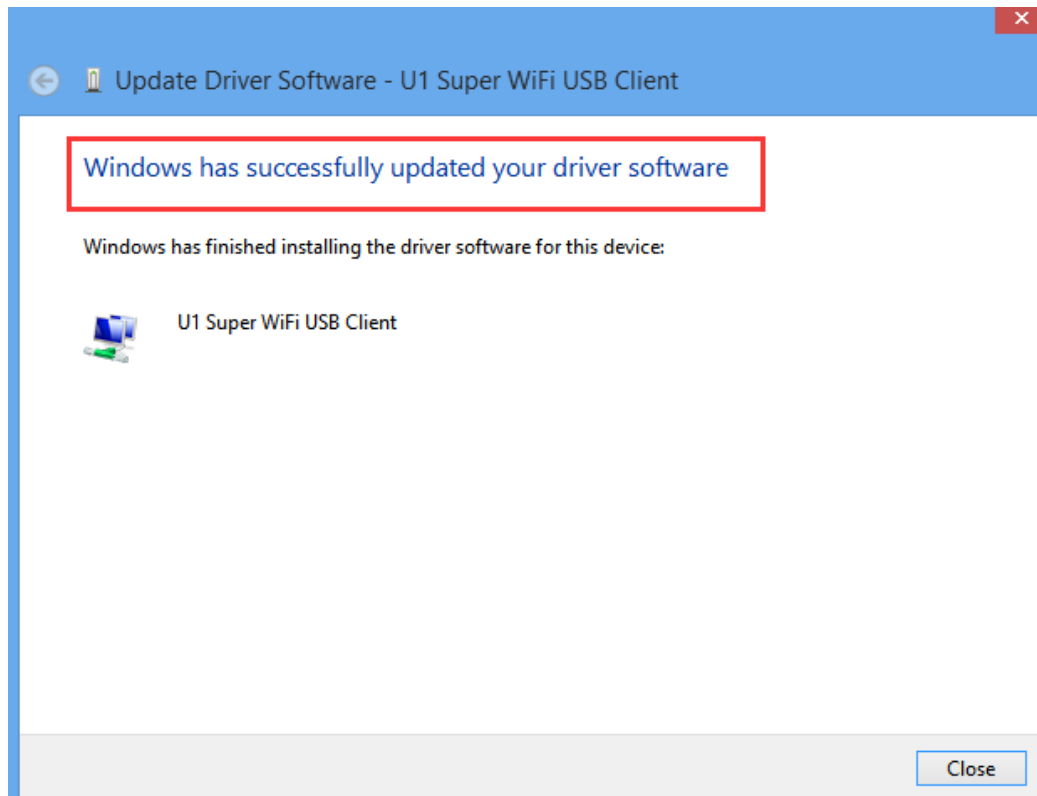


3. Right-Click the detected new icon and select **“Update Driver Software...”**

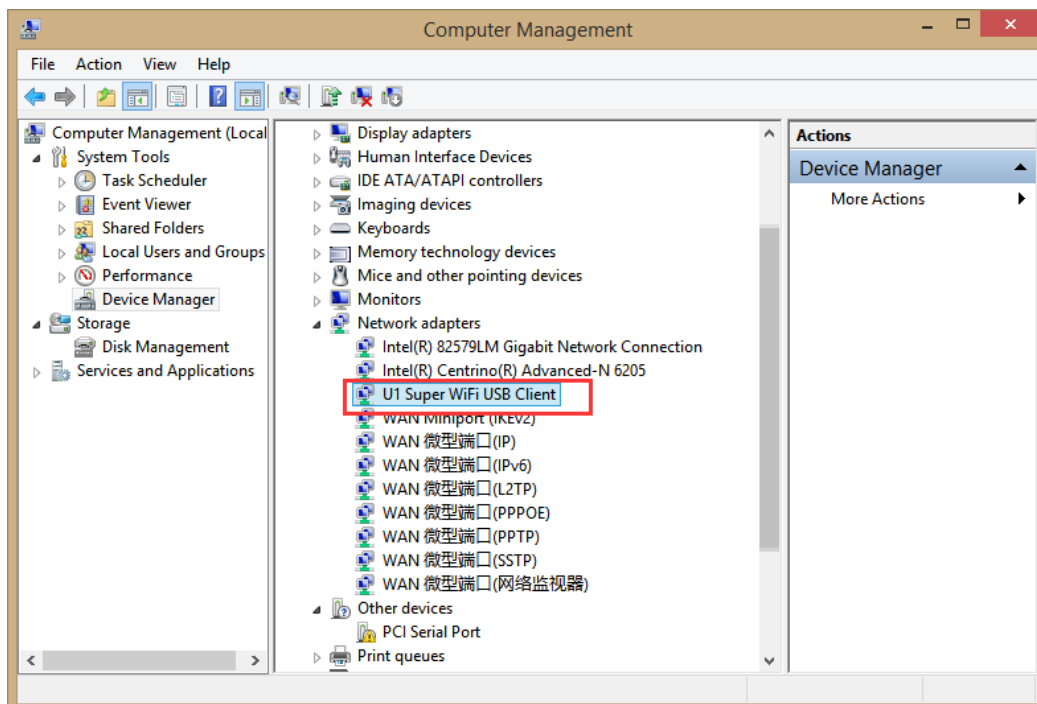
Select **“Browse my computer for driver software”** and select the driver file based on the system type (32bit or 64bit).







4. When the update finished successfully, go to Device Manager to check if below icon raised up under "**Network adapters**" which mean the U1 can be used now.



5. Now you can use the U1 to connect the wireless signal.

