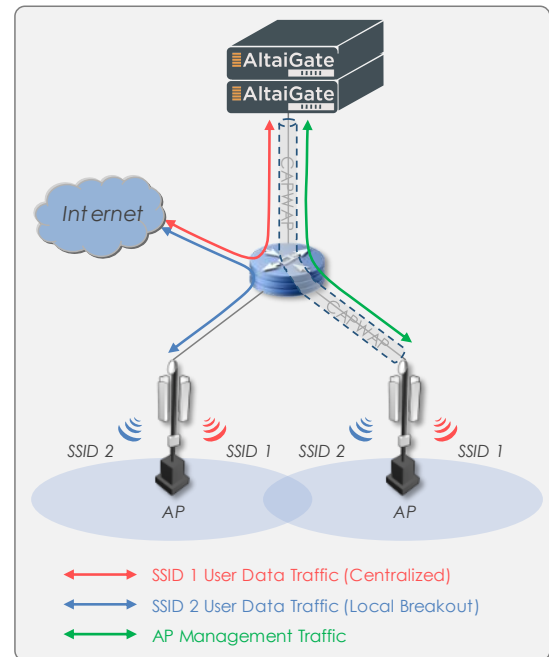
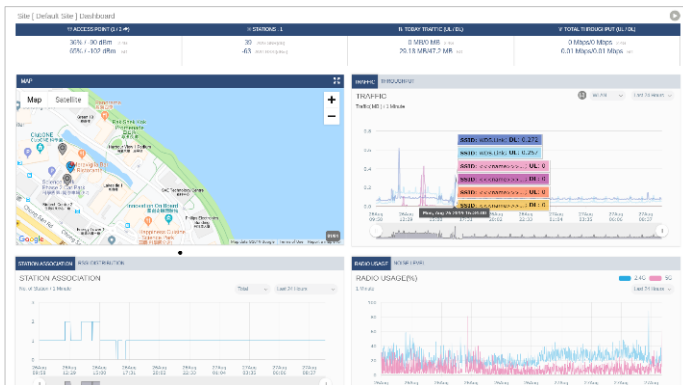


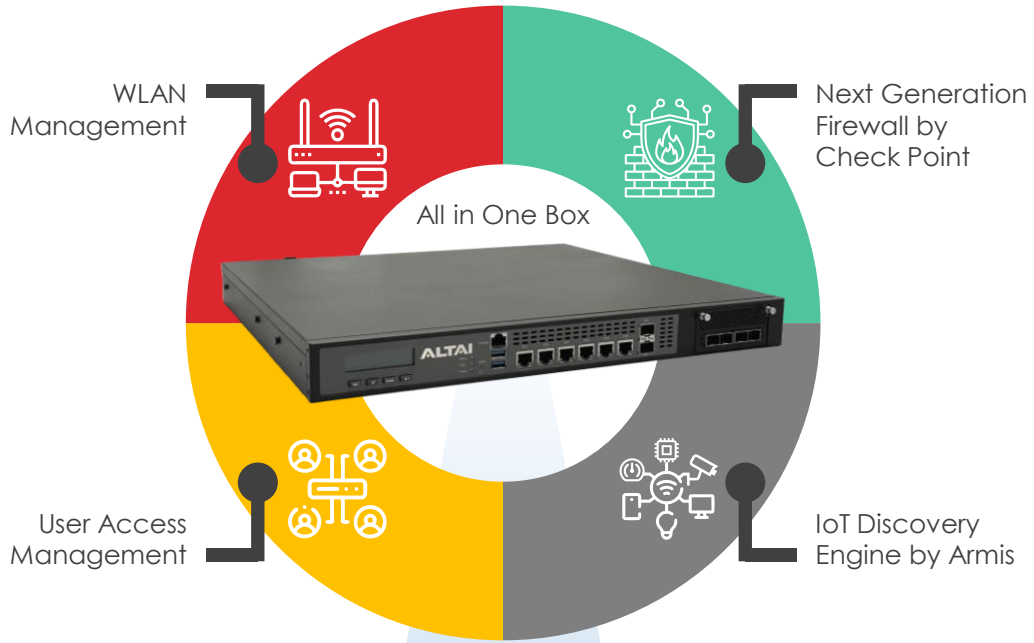
AltaiGate 510 is a WLAN controller specifically crafted for medium to large-sized networks. Equipped with a central processor housing eight cores, each with two threads, the AltaiGate 510 empowers you to effortlessly manage up to 500 Altai Super WiFi access points and accommodate 10,000 client devices in a centralized forwarding network architecture.

Designed with ease of use in mind, the AltaiGate 510 simplifies the setup of your entire Wi-Fi network. Its intuitive web-based configuration interface ensures a smooth and hassle-free experience. Deployable within any Layer 2/3 network, the AltaiGate seamlessly connects with Altai Super WiFi access points, enabling a truly plug-and-play Wi-Fi network deployment.



## Features and Benefits

- Best value in price/performance:**  
 Support up to 500 APs and 10,000 client devices at an affordable cost. Expand your network capabilities and scale with ease.
- Effortless Network Management:**  
 The intuitive web interface allows the administrators to set up and manage the Wi-Fi network much more easily; The centralized management feature further streamlines network administration, saving you time and effort.
- Comprehensive Access Services:**  
 The AltaiGate 510 offers a complete range of Wi-Fi access services, including built-in support for RADIUS and captive portals. It effortlessly manages client onboarding and network access control for both enterprise and guest Wi-Fi networks, empowering you to deliver a seamless and secure Wi-Fi experience.
- Robust network security:**  
 Strengthen your network's defenses with Check Point Next Generation Firewall. The AltaiGate 510 seamlessly integrates with various backend authentication databases like RADIUS and Active Directory, ensuring robust network security and protecting against unauthorized access.
- Advanced RF management:**  
 Support rogue AP detection, auto channel selection and multi-AP steering to optimize network performance, minimize interference, and enhance overall wireless connectivity.
- Flexible deployment:**  
 Support both centralized and distributed forwarding architectures. This versatility allows you to tailor your network setup to meet specific requirements, maximizing deployment flexibility.



\* The support for Check Point Nano Agent varies based on the AP models.

## Physical Specifications

- Dimensions (W x D x H) 1RU: 438 mm x 422 mm x 44 mm
- Weight 9.0 kg
- Power Supply 1+1 Redundant AC PSU Modules
- Power Consumption 300 W
- Network Interface
  - 4 x 10GbE SFP+ ports (Data)
  - 1 x 1GbE port (Management)
  - 1 x 1GbE port (High Availability)
- Operating Temperature 0 °C to +40 °C
- Storage Temperature -20 °C to +70 °C
- Humidity 5% – 90% (Non-Condensing)

## Network Capacity

- Managed APs 500 (Max.)
- Concurrent Users 10,000 (Max.)

## Data Plane

- Architecture
  - Centralized Forwarding (Tunnelling)
  - Distributed Forwarding (Local Breakout)
- Data Tunnelling
  - Layer 2
  - Layer 3
- VLAN
  - Per WLAN Assignment (Access/Trunk)
  - Role-Based Assignment (Dynamic VLAN)
  - VLAN Pooling
  - Port-Based
- DHCP Server, DHCP Relay
- NAT

## AP Management

- Site-Based Configuration and Batch Provisioning
- WLAN Scheduling
- Bulk Firmware Update Scheduling
- Radio Resource Management
- Google Map and Indoor Layout Import
- Real-Time AP/Station/Bridge Link Monitoring
- Bridge Link Topology Visualization
- Scheduled Reporting
- Alert Notification

## Access Services

- Captive Portal
  - Portal Page Templates and HTTP/CSS Customizable Package
  - Click-Through, User Sign-Up and Standard Account Login
  - Guest Access Vouchers
  - MAC Caching
  - Targeted Advertising
- RADIUS
  - User Group and Account Management
  - Per-User QoS and Access Control
  - User Traffic Accounting

## WLAN Security

- Standards
  - WPA/WPA2/WPA3
  - 802.11i
  - 802.11w (Management Frame Protection)
- Authentication
  - WPA/WPA2-Personal (PSK)
  - WPA/WPA2-Enterprise (802.1X/EAP)
  - WPA3-Personal (SAE)
  - WPA3-Enterprise (802.1X/EAP)
  - WEP
  - Open (Portal, MAC Authentication)
  - † Multi-PSK
  - Combination of Portal and PSK
  - Combination of MAC Authentication and PSK
- Encryption
  - WEP
  - TKIP
  - AES
- User Database
  - Internal RADIUS
  - External: RADIUS, Active Directory
- User Access Control
  - MAC Address-Based ACL
  - Layer 3/4 ACL
  - Layer 2 Isolation
- Wireless Intrusion Prevention System (WIPS)
  - Rogue AP/Client Detection
  - DoS Attack Prevention
  - AP Spoof Prevention
  - Password Guessing Protection
- Third-Party Integration
  - Check Point Next Generation Threat Prevention & SandBlast™
  - Armis IoT Discovery

## System Management

- Interfaces
  - Web
  - † SNMP v1/v2c/v3
  - † Restful API
- Diagnostics
  - Packet Capture
  - Event Log and System Log
  - User Authentication Log
  - Client Association History
- Access Management
  - Trusted IP
  - Multiple Login Tiers
  - Password and Account Lockout Policies
- Dual-Image Support
- 1+1 Redundancy with Auto-Synchronization

## Certifications

- CE/FCC/Others
- RoHS2 Compliance

† Will be available in the future.

Product Ordering Information	
<b>AltaiGate 510</b>	
Part No.: SD.GA-0510-00	AltaiGate 510 Super WiFi WLAN Controller <ul style="list-style-type: none"> <li>• 1+1 Redundant AC Power Supply</li> <li>• Basic License for up to 50 Altai Access Points (Upgradable up to 500 Altai Access Points)</li> </ul>
<b>AltaiGate 510 with Next-Gen Firewall</b>	
Part No.: SD.GA-0510-04	AltaiGate 510 Super WiFi WLAN Controller w/ NGTX – 4 Core <ul style="list-style-type: none"> <li>• 1+1 Redundant AC Power Supply</li> <li>• Basic License for up to 50 Altai Access Points (Upgradable up to 500 Altai Access Points)</li> <li>• Check Point Next Generation Threat Prevention &amp; SandBlast™ (NGTX) including the First Year Subscription</li> </ul>
Part No.: SD.GA-CPCL-GW	Smart-1 Cloud to Infinity Portal <ul style="list-style-type: none"> <li>• SmartEvent Blade with service package for 1-year license per NGTX</li> </ul>
Part No.: SD.GA-CGNG-04	Additional 1-Year Subscription for Check Point Next Generation Threat Prevention & SandBlast™ (NGTX)
<b>IoT Discovery</b>	
Part No.: SD.GA-TP0S-1Y	IoT Total Protect for Small Site <ul style="list-style-type: none"> <li>• 500-1000 Assets for 1 Year (Armis)</li> <li>• Applicable to SD.GA-0510-04</li> </ul>
Part No.: SD.GA-TP0M-1Y	IoT Total Protect for Medium Site <ul style="list-style-type: none"> <li>• 1001-2500 Assets for 1 Year (Armis)</li> <li>• Applicable to SD.GA-0510-04</li> </ul>
Part No.: SD.GA-TP0L-1Y	IoT Total Protect for Large Site <ul style="list-style-type: none"> <li>• 2501-5000 Assets for 1 Year (Armis)</li> <li>• Applicable to SD.GA-0510-04</li> </ul>
Part No.: SD.GA-TP1L-1Y	‡ IoT Total Protect for XL Site <ul style="list-style-type: none"> <li>• 5001-7500 Assets for 1 Year (Armis)</li> <li>• 24x7x365 Access Support Included</li> <li>• Applicable to SD.GA-0510-04</li> </ul>
<b>Nano Agent</b>	
Part No.: SD.GA-NA1A-1Y	IoT Protect Nano Agent <ul style="list-style-type: none"> <li>• 1 Year License per AP</li> </ul>
<b>License Pack</b>	
Part No.: SD.GA-LCS0-01	AltaiGate License Upgrade for 50 Altai Access Points
<b>Contact Us</b>	
<ul style="list-style-type: none"> <li>• Email: <a href="mailto:sales@altaitechnologies.com">sales@altaitechnologies.com</a> or <a href="mailto:info@altaitechnologies.com">info@altaitechnologies.com</a></li> </ul>	

‡ For an IoT discovery package to support more than 7500 assets, please contact our sales representatives.

AG510-PB-240429

The information contained herein is subject to change without prior notice.