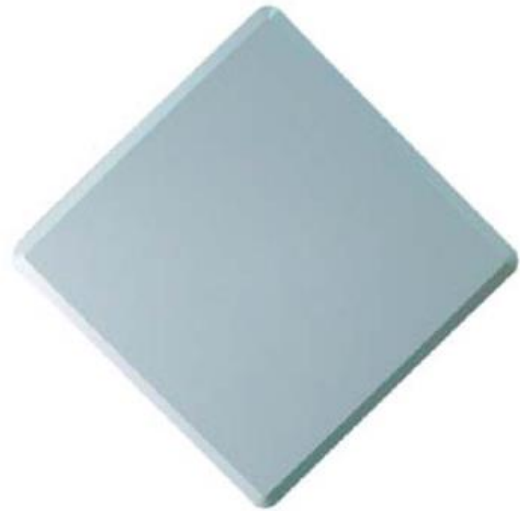


### Electrical Specifications

• Frequency Range	5.15 – 6.1 GHz
• Gain	20 dBi
• Polarization	Dual Linear $\pm 45^\circ$
• Horizontal Beamwidth	10° (-3 dB)
• Vertical Beamwidth	10° (-3 dB)
• VSWR	2 (Max.)
• Front-to-back Ratio	-30 dB (Max.)
• Isolation	24 dB (Min.)
• Impedance	50 $\Omega$
• Power Handling	20 W (cw)
• Lightning Protection	DC Ground

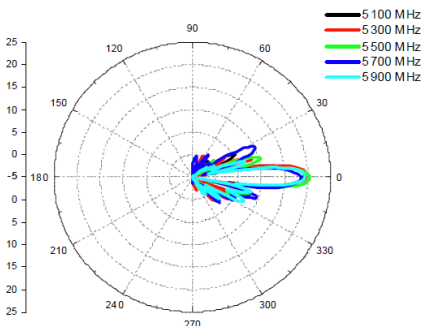
### Environmental and Mechanical Specifications

• Temperature	-40 °C to +80 °C
• Wind Loading	Up to 216 km/h (134 mph)
• Weatherproof	IP57 Compliant
• Radome Color	Gray
• Radome Material	PC, UV Resistant
• Dimensions	320 x 320 x 20 mm
• Connector	2 x N-female
• Mounting	Pole or Wall-mounted

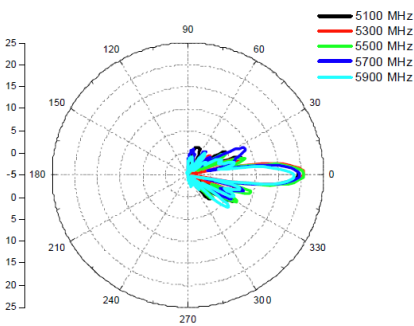


### Antenna Patterns

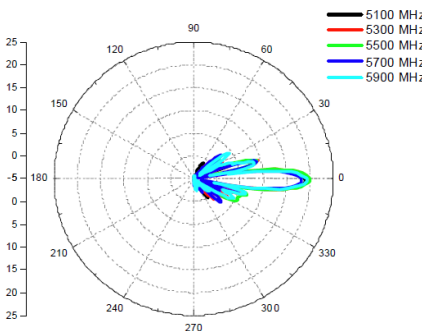
H-plane Co-polarization, Port 1



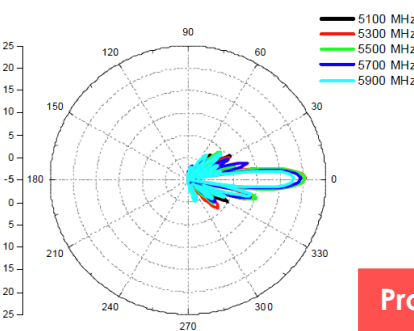
H-plane Co-polarization, Port 2



V-plane Co-polarization, Port 1



V-plane Co-polarization, Port 2



### Product Ordering Information

- 5 GHz 20 dBi Panel Antenna (Part No.: SD.AN-5P20-00)

#### Contact Us

- Email: [sales@altaitechnologies.com](mailto:sales@altaitechnologies.com)

5P20-AN-221026

Although Altai has attempted to provide accurate information in these materials, Altai assumes no legal liability for the accuracy and completeness of the information. All specifications are subject to change without notice.