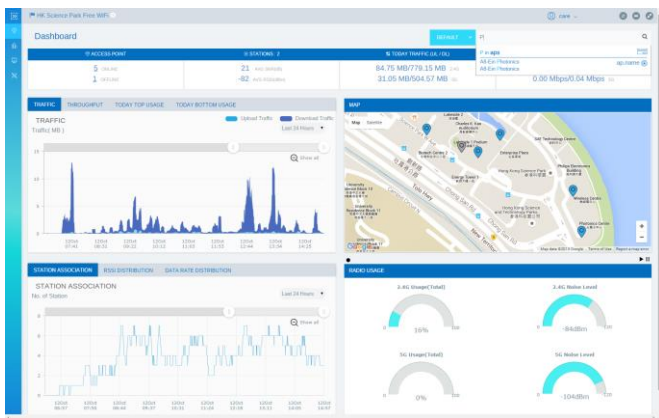


AltaiCare Network Management Solution

AltaiCare is a cloud-based network management and service control software system. It is designed for WiFi service providers with integrated network management and service control functionalities for fast and cost saving service provisioning, as well as location-aware content management and big data analytics to help defining sales and marketing strategies based on customer behavior.

Service providers or enterprises can simply subscribe the AltaiCare cloud-based management solution for the number of AP and year they need. We support option of hosting the AltaiCare on customer's premises such that they can manage the AltaiCare on their own and can integrate the AltaiCare into their core network.



AltaiCare for Secured AP Management

The AltaiCare solution provides network operators a centralized way to remotely administrate and control the APs and the network. It supports full suite of configuration, performance, fault, operation and administration management features. The AltaiCare is deployed in local breakout architecture – only SSL encrypted management traffic goes to the cloud, while the data and control traffic stays locally – it ensures high data security for the users.

AltaiCare for Service Control

The latest Altai AP firmware has built-in service controller feature. When AltaiCare works with Altai AP, it supports service control functionalities without the need to purchase a separate service controller. The AltaiCare supports EAP, MAC address and captive portal authentications. It supports pre-paid, post-paid, guest access billing models as well as per user account database with QoS profile.

Cost Saving and Quick Setup

With AltaiCare, users can easily deploy a WiFi network at low cost without the need to install any physical controller. The AltaiCare zero configuration function can automatically push the predefined configuration to an AP once it is connected to the Internet. This rapid setup suits perfectly for hotspot or event types of WiFi provisioning.

High Availability

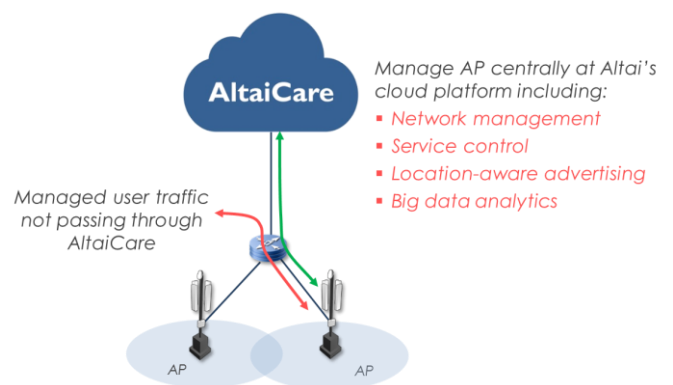
Altai installed its AltaiCare servers at renowned cloud-based data centers with fully failover protection and data backup. The AltaiCare is designed for carriers, wireless ISPs as well as businesses with high availability.

Location-aware Advertising

The AltaiCare supports automatic feeding of targeted branding and advertisements to a client through a portal or landing page according to the AP's location where the client is associating to. The site operator can develop its own mobile app using the optional AltaiCare mobile app SDK software. The location-aware mobile app can detect both Altai beacon's and Altai AP's location and tell the AltaiCare to feed the targeted advertisement content to the client. It can be used for marketing promotion in shopping malls, facilities promotion in hotels and club houses and resources management in schools and universities.

Big Data Analytics*

It is important to know where your customers like to stay or spend when preparing a sales strategy or enhancing a WiFi coverage plan. The AltaiCare software supports additional big data analytics feature providing user behavior analysis at the cloud back end.



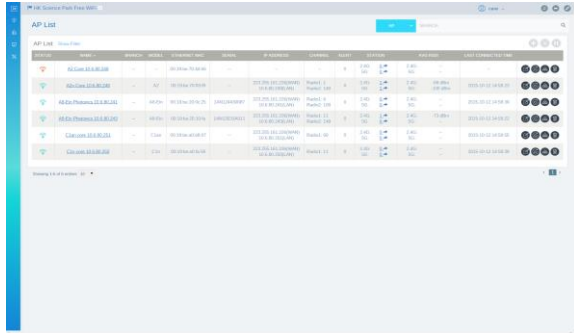
As an integral part of our Super WiFi network, key benefits of using AltaiCare include:

- Cost saving – no AP controller, access controller or service controller is required
- Ease of deployment – cloud-based and zero configuration supports fast provisioning at ease
- Powerful multiple-site remote management
- Powerful controller functions – including local breakout and captive portal
- High security, scalability and reliability
- Flexible 3-tier user and security login
- Green-friendly – the radio can be automatically turned down during non-service hours
- Advertising content management supporting AP location-aware or Altai beacon content feeding
- User behavior and web-surfing history big data analytics

Network Management

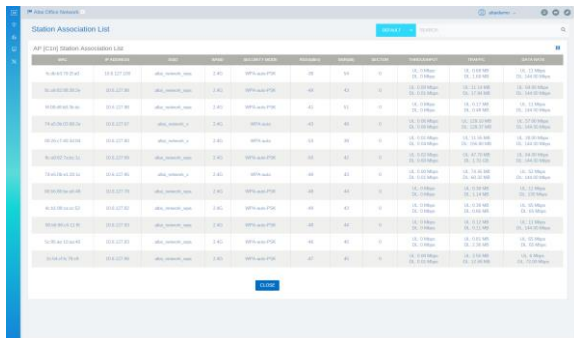
Configuration Management

- Site-based Configuration
- Zero Configuration
- Scheduled WLAN Service Provisioning
- Scheduled Firmware Upgrade
- Multiple Firmware Images



Performance Management

- Real Time AP and Station Performance Statistics
- Interactive Performance Statistics Diagrams
- Top 10 Usage Stations and AP List
- Site/ AP Performance Dashboard
- AP/ Station Performance Reporting*



Network Map Management

- Google Map Support
- Baidu Map Support
- Multi-layer Indoor Map Support

Fault Management

- Real-time Alert Collection and Reporting
- Visual Fault Alert via Network Map
- Email Alert*

Operation and Administration Management

- 3-tier Login for Project Administrator, Site Administrator and Site Monitor
- Responsive Web UI – Tablet/ Jumbo Screen (for NOC)
- Powerful Search Engine
- Host IP Address Binding on User Account*

Content Management

Location-aware Advertising

- AP-based Advertisement Feed
- Altai Beacon-based Advertisement Feed
- Mobile Friendly Portal Page with Advertisement
- RESTful Web Service API for Mobile App
- Mobile App SDK Support



Service Control

Choice of Authentication

- EAP Authentication
- MAC Address Authentication
- Portal Authentication
- Per SSID Authentication Type
- Combined Authentication Support
- Local Breakout With Roaming Support

Billing Service

- Local User Account Database With User QoS Profile
- RADIUS Accounting and Reporting Support
- Prepaid/ Post-paid/ Guest Access Model
- Mobile Phone Registration on Portal Page via SMS*
- Payment Gateway Integration*

Ease of Integration

- Customizable Local Portal
- External Portal Service Interface
- Remote RADIUS Interface
- Active Directory Interface

Altai Beacon

- Wireless Interface 802.11b/g/n and Bluetooth*
- Input Power 100 to 240 VAC
- Dimensions 59 x 95 x 61 mm (US)
- Environment Indoor Only

Product Ordering Information

AltaiCare Subscription

- AltaiCare Annual Subscription per A8n, A3/A2 or C1n Series AP
- Including Network Management, Service Control and Content Management Features
- Technical Support and Software Upgrade
- Optional Mobile App SDK Software*

AltaiCare On-premises Option*

- For Customer Who Wants to Install AltaiCare at Its Premises
- Installation, Hosted, Managed and Upgraded by Customer
- Purchase AltaiCare Subscription + One-time Remote Setup Support

Contact Us

- Email: sales@altaitechnologies.com

* Will be available in future

Care-PB-160815

Although Altai has attempted to provide accurate information in these materials, Altai assumes no legal liability for the accuracy and completeness of the information. All specifications are subject to change without notice.