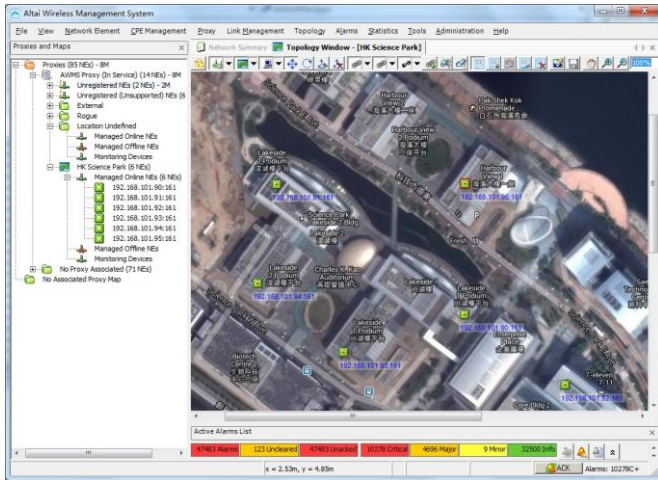


## Altai Wireless Management System

Altai Wireless Management System provides network operators a full suite of element and network management functions for Wi-Fi networks. It facilitates operational functions that include configuration management, fault management, performance monitoring and security function. It reduces the complexity of network provisioning, operations and maintenance through remote and centralized administration.



## Centralized Management of Network Equipment

AWMS provides network operators a centralized way to remotely administer and control WiFi base stations in the network, significantly reducing the workload for local configuration and monitoring. AWMS provides users a full network view so that the operator can monitor, at a glance, the whole network topology and status. This graphical view shows network layout, including inventory and configuration of each BTS in the network and all wireless facilities connecting them.

## Accelerate Network Deployment

AWMS allows operator's flexibility in setting up a WiFi network. Once WiFi base stations are installed on site, auto-discovery and template-based mass provisioning will enable network operators to configure large numbers of WiFi base stations quickly and enable the entire network to be operational in a short time.

## Improve Network Health and Quality

AWMS collects equipment and wireless facility alarms both automatically and on-demand. It maintains the real-time status of the whole network and displays alarm information graphically and textually.

The user-friendly Graphical User Interface (GUI) presents and organizes correlated alarm information clearly. An operator can act quickly to reduce outages. The color-coded logical network map uses icons to represent each managed Network Element. It enables fast, effective fault management through its visual alarm notification, alarm processing and tracking capabilities.

## Enhance Network Security

AWMS allows network operators to set and continually enforce multi-layer network authentication and data encryption configurations, including SSID, ACL, WEP, 802.1x and WPA.

In addition, AWMS also simplifies and improves system security. It centralizes the administration of individual user accounts and online sessions, and provides a permission scheme that assigns users to different network geographic groups and functional groups.

## Reduce Network Operating Cost

AWMS can help network operators to reduce operating costs by simplifying network administration and control throughout the network life cycle, in provisioning, operation and maintenance.

With AWMS, operators can handle today's Wi-Fi network equipment while leaving room for growth and incorporating the ability to respond quickly to any emerging technologies and products, thereby protecting the users' investment.

## High Availability

The latest AWMS version supports cold-standby feature. Two AWMS systems can be setup and they will be automatically synchronized.

### As an integral part of our Super WiFi network infrastructure, main features of the AWMS include:

- Visual fault alert via network map
- Single/mass NE configuration
- Template and group based configuration
- Automatic NE detection and provisioning
- On-demand/schedule based firmware upgrade
- Wi-Fi client registration and searching by user identity
- Real time system performance/NE traffic statistics
- System/NE/Wi-Fi client performance reporting
- Rogue AP detection and channel scan summary
- Link connection and status monitoring

### System Capacity

- Maximum Number of Network Elements (NE) 4,000
- Maximum Number of Proxy per AWMS Server 6
- Maximum Number of Concurrent AWMS Client 8

### Supported NE Type

- Altai A8 Series Super WiFi Base Station
- Altai A8n Series Super WiFi Base Station
- Altai A2 Series WiFi Access Point/ Bridge
- Altai A2-Ei Series Access Point/ Bridge
- Altai DAS AP
- Altai B5 Series Bridge
- Altai C1 Super WiFi CPE/ AP
- Altai C1n Series Super WiFi CPE/ AP

### Supported Languages

- English
- Simplified Chinese
- Traditional Chinese

### Hardware and Software Platform (by customer)

- 3-layer architecture: AWMS server, Proxy server and AWMS client
- **AWMS server** (for medium network, same as below)  
Desktop CPU Core i7-4770, 4 GB RAM, 40 GB HDD, 100 Mbps Ethernet or above  
Windows 2003/2008 Server (32/64 bits), MySQL 5.0.96, Java SDK 1.6.0\_30
- **Data Server** integrated with AWMS server
- **Proxy Server** integrates with AWMS server or  
Desktop CPU Core i5-4670, 4 GB RAM, 40 GB HDD, 100 Mbps Ethernet or above  
Windows XP/7/8 Pro (32/64 bits), Java SDK 1.6.0\_30
- **Client Server**  
Desktop CPU Core i3-3220, 2 GB RAM, 40 GB HDD, 100 Mbps Ethernet or above  
Windows XP/7/8 Pro (32/64 bits)

### AWMS Feature Highlight

#### Fault Management

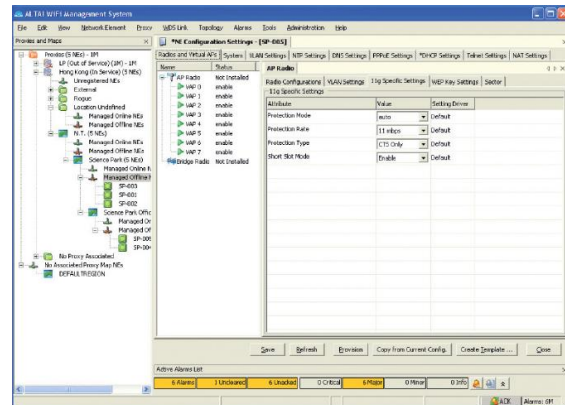
- Real-time alarm collection and reporting
- Visual fault alert via network map
- Alarm acknowledgement and forced deletion
- Alarm email alert
- Alarm SMS alert
- Event logging
- Historical alarm tracking and reporting
- Alarm SNMP trap for Northbound integration

#### Configuration Management

- Single/mass NE configuration
- Template based configuration
- NE grouping
- Automatic NE detection and provisioning
- Network configuration resynchronization and consistency check
- Configuration via network map
- On-demand schedule based firmware upgrade
- Multiple firmware images

#### Administration Management

- Wi-Fi client association summary
- Wi-Fi client detailed information registration



- Wi-Fi client searching by user identity
- Wi-Fi client association summary history searching
- Wi-Fi client IP detection

#### Performance Management

- Real time system performance statistics
- Real time system/NE traffic statistics
- Real time client traffic statistics
- Hourly/weekly/monthly system/NE performance reporting
- Hourly/weekly/monthly client performance reporting

#### Security Management

- System user security management
- WEP/ WPA
- MAC address access control
- Rogue AP detection
- Different login levels for AWMS client

#### RF Management

- On-demand/schedule based channel scanning
- Channel scan summary
- Hotzone determination\*

#### Bridge Link Management

- Link discovery
- Link inventory
- Link connection status monitoring

#### Network Map Management

- Outdoor map (GPS alignment)
- Indoor map alignment
- NE location (GPS alignment)
- NE logical view
- Antenna direction\*

### Product Ordering Information

- **Standard Package**
- AWMS Software for 1 to 25 NE
- Expandable by adding License Pack for 10, 100, 500 or 1,000 additional NE
- 1 year 8x5 remote technical support and software upgrade
- Additional yearly technical support option

#### Contact Us

- Email: [sales@altaitechnologies.com](mailto:sales@altaitechnologies.com)

\* Feature will be available in future release AW-PB-160815

Although Altai has attempted to provide accurate information in these materials, Altai assumes no legal liability for the accuracy and completeness of the information. All specifications are subject to change without notice.