

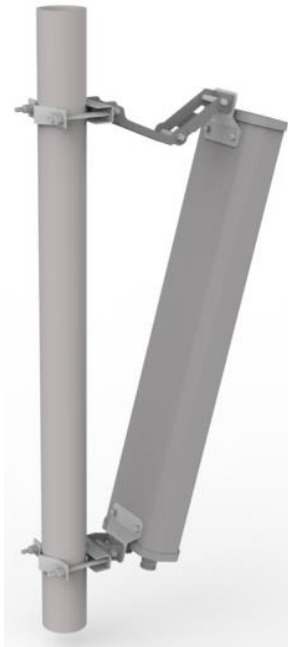
Electrical Specifications

• Frequency Range	5.15 – 5.85 GHz
• Gain	16 dBi
• Polarization	Dual slant, $\pm 45^\circ$
• Horizontal Beamwidth	60° (-3dB), 100° (-6dB)
• Vertical Beamwidth	8° (-3dB)
• VSWR	2 (Max.)
• Front-to-back Ratio	-25 dB (Max.)
• Isolation	28 dB (Min.)
• Impedance	50 Ω
• Power Handling	50 W (Max.)
• Lightning Protection	DC ground

Environmental and Mechanical Specifications

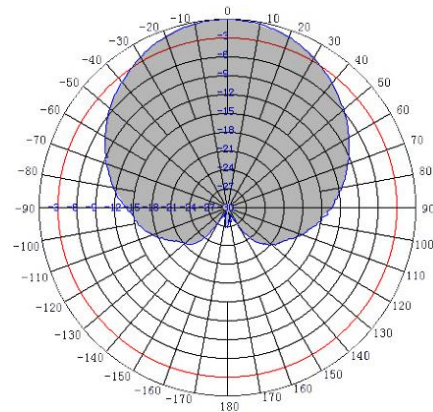
• Temperature	-40 °C to +60 °C
• Wind Loading	Up to 200 km/h (123 mph)
• Radome Color	Gray
• Radome Material	PVC
• Weight	1.5 kg
• Dimensions	420 x 135 x 45 mm
• Connector	2 x N-female
• Mounting Type	Top and Bottom Mount
• Pole Diameter	Ø30 to 80 mm
• Mechanical Downtilt	30° (Max.)

Mounting Scenario

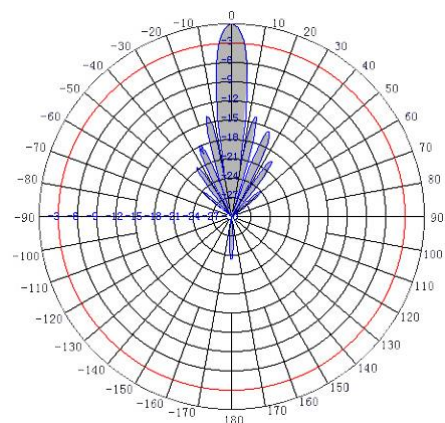


Antenna Patterns

H-plane Co-polarization



V-plane Co-polarization



Product Ordering Information

- 5 GHz 16 dBi Sector Antenna (Part No.: SD.AN-5S16-00)

Contact Us

- Email: sales@altaitechnologies.com

AN-PB-141125

Although Altai has attempted to provide accurate information in these materials, Altai assumes no legal liability for the accuracy and completeness of the information. All specifications are subject to change without notice.